

A black Angus cow is grazing in a green field. A large, leafless tree stands to the left of the cow. The background shows rolling hills under a clear sky.

Armstrong's
Breeding for Profitability!
Angus Ranch

Wednesday, December 12, 2018

At the ranch near Cardwell, Montana

Sale starts at 1:00pm

Welcome To:
Armstrong Angus Ranch

Auctioneer: Dave Ashcraft
406-596-3474

Ring Men: John Goggins

Cell: 406-698-4159 Office: 406-259-4589 Email: wlrjohn@men.net

Billy Whitehurst
Cell: 406-490-3910

Sale: Wednesday, December 12, 2018

Lunch: 12 pm **Sale: 1pm**

Bulls will sell in order of their birth/catalog order

Sale Location: Exit off of interstate 90 at the Cardwell, MT exit. Take highway 359 toward Harrison, MT 4-4 1/2 miles to Cemetery Hill Rd (There is an Armstrong Angus sign along the road) turn right and travel up the gravel road 1/2 mile and turn left, just before the first house on the left. Go 1/4 mile to Chad and Trista's house and the sale is there. Look for signs.

Herd Health: The bulls are fertility tested by Dr. Cory Tebay (406-287-3333) Western Veterinary, Whitehall, MT and we guarantee them as sound breeders. The bulls are poured with Vetrimec when we semen test. All females selling have been ultrasounded in late July by Dr. Don Beck, Falon County Vet, Baker, MT and pregnancy tested by Dr. Cory Tebay the day before the sale. They have been poured with Vetrimec and given the first shot of ScourGuard 4KC.

Delivery: Bull delivery is free up to 300 miles if there are 3 or more bulls going that direction. Heifer delivery is at your cost.

Absentee Bidding: If you can't make the sale, please feel free to call Chad (406-490-8096) or one of the ring men.



*Trista & Chad Armstrong
Home: 406-287-3212
Cell: 406-490-8096*



*Melvin Armstrong
Celebrating his 80th birthday*

Hello everyone and thank you for looking through our catalog and reading my thoughts for the year. For me it's been both a trying and blessed year as I once again was given a lesson on just who is in charge here. It has been a depressing year with my minor stroke, heart failure, and irregular heartbeat as I struggled with the limitations of what I could do. It has also been a very blessed year with the best crops we've ever had and the pride of seeing our kids mature and cover for what I couldn't do.

This year's life has given me time to contemplate and reflect on our cow herd and our responsibility of providing "the best seedstock" that we can. Our philosophy has always been to breed the most "efficient" cattle possible. When I say "efficient" I am talking about profit as well as feed efficiency. "Efficient" cattle provide you with the most profit after expenses, not just the biggest calves or the ones that eat the least. "Efficient" cattle need to be fertile, bulls need to get the cows bred and last for several years. Cows need to breed every year and they need to stay sound to stay in the herd, (no bad feet or poor structure).

I feel EPD's are an important tool, but I feel we as an industry put too much emphasis on them. I feel we are single trait selecting for EPD's. I also feel that within each area and feed (mineral composition) some cattle will perform better in each different environment (exp/one animal may perform better in Montana than in Nebraska and another just the opposite). My customers need what performs better ("efficiency") here and not somewhere else even if their EPD's are better. They might perform better in all areas but here, but that isn't as profitable to my customer or myself.

With this being said, I am going to start making some changes in my catalog and breeding program. I am making a star/point system for each bull and each trait including: calving ease/birth weight, weaning weight, frame size, fleshing ability, temperament, fertility/libido, structure/feet soundness, carcass quality, daughters milk production and daughters mothering/udder structure. This is my opinion on the bulls expected performance on these traits. This year this information will be on a supplement sheet available sale day.

I am also going to keep a 1/3 interest in-herd semen use on all bulls selling so I can collect and use semen on any bull I may want to use in the future. I am going to use some yearling bulls each year and sell them as 2 year olds and use semen on some "efficient" bulls from past sales to hopefully make more progress in these "efficient" traits (especially fertility/libido and structure/feet soundness). I would appreciate your feedback on the bulls you buy or may have bought as they mature into older bulls that you feel may stand out as "efficient" bulls. I also would love to visit with any of you on these thoughts.

Thank you again for your interest in what we are doing in our breeding program and your past input and friendship. Please call if you have any questions or if you wish to come look at the cattle before the sale.

The Chad Armstrong family



Herd Sires



Connealy Onward
Sitz Upward 307R
Sitz Henrietta Pride 81M
Sitz Alliance 6595
Mytty Countess 906
Baldrige Countess 357

CCA Uno 049 Reg. 16644974

Birth date 01/14/2010

<u>BW</u>	<u>WW</u>	<u>YW</u>	<u>Milk</u>	<u>Marb</u>	<u>RE</u>
+1.4	+59	+100	+33	+31	+54

An easy calving bull we used to improve feed efficiency. The daughters have nice udders with small teats. His offspring tend to have more fleshing ability and less frame than most upward cattle.

AAR Convertabull 401 Reg. 18028454

Birth date 1/19/2014

<u>BW</u>	<u>WW</u>	<u>YW</u>	<u>Milk</u>	<u>Marb</u>	<u>RE</u>
+5	+54	+85	+20	+34	+39

A bull that we used as cleanup on our heifers but he had a little too much birth weight. We have started using him again because of his soundness and efficiency.

Rito 112 of 2536 Rito 616
Willekes Converter 4402-9
Willekes Lady of 410
Cole Creek Black Cedar 46P
Barbara Perfection 2058 AAR
Barbara perfection 158 AAR



OOC Emblazon 854E
OOC Juneau 807j
OOC Dixie Erica 903E
CA Future Direction 5321
Mid Ambushess 354
Trans Ambushess 147

MCD AAR Juneau 944 Reg. 16455009

Birth date 3/18/2009

<u>BW</u>	<u>WW</u>	<u>YW</u>	<u>Milk</u>	<u>Marb</u>	<u>RE</u>
-.5	+41	+67	+32	+.58	+.55

Very easy calving and fleshing, low maintenance bull. His calves come easy and get up quick. His daughters have been quiet, small framed, easy keeping cows that seem to breed up well and stay.

AAR Sure Shot 3012 Reg. 17653672

Birth date 2/13/2013

<u>BW</u>	<u>WW</u>	<u>YW</u>	<u>Milk</u>	<u>Marb</u>	<u>RE</u>
+1.0	+54	+88	+28	+24	+46

Mytty In Focus
Mogck Sure Shot
Mogck Black
B/R New Design 036
Barbaramere 080 AAR
Barbaramere 773 AAR

We raised this bull and used him for cleanup. He is a larger framed bull in our herd but seems to have really good feed efficiency.

Herd Sires

Sinclair Emulate 7xt28
Sinclair Fortunate Son
Sinclair Blackbird 2P8 7079
Cole Creek Black Cedar 46P
Performiss 029
Glory 1148 Trendess 877

MCD Fortunate 506 Reg. 18387007

Birth date: 3/9/2015

<u>BW</u>	<u>WW</u>	<u>YW</u>	<u>Milk</u>	<u>Marb</u>	<u>RE</u>
-.5	+55	+93	+24	+.64	+.31

We really like the pedigree of this bull and his feed efficiency (possibly not the best disposition) .

AB-LVS Capitalist 4507 Reg. 17762778

Birth date: 1/11/2014

<u>BW</u>	<u>WW</u>	<u>YW</u>	<u>Milk</u>	<u>Marb</u>	<u>RE</u>
+.8	+70	+130	+21	+.51	+.79

SAV Final Answer 0035
Connealy Capitalist 028
Prides Pita of Conanga 8821
WMR Timeless 458
AB-LVS Emma 096
OX Bow Emma E396

We are very pleased with the first offspring of this Capitalist son from the Midland Bull test. He is proving to be a light birthweight bull with powerful growth in a small thick package. Possibly the quietest cattle we have ever been around.



McD Performer 472 Reg. 17947437

Birth date: 3/28/2014

<u>BW</u>	<u>WW</u>	<u>YW</u>	<u>Milk</u>	<u>Marb</u>	<u>RE</u>
+.4	+39	+76	+26	+.10	+.2

Schafer 21st Century
Schafer 21C of 514 1005
Chase 878 Lady Bando 07-514
B C Mid Emblazon 854E 702
Mid Eldorene 6511
Mid Eldorene 384

A bull we bought because of his good feed efficiency and a little more frame than some of our bulls. He is a calving ease bull.

Fairview Renegade 4166 Reg. 18164849

Birth date: 7/5/2014

<u>BW</u>	<u>WW</u>	<u>YW</u>	<u>Milk</u>	<u>Marb</u>	<u>RE</u>
-2.4	+38	+60	+22	-.16	+.18

RR Rito 707
Rito 707 of Ideal 3407 7075
Ideal 3407 of 1418 076
Leachman Right Time
Fairview Lady Traveler x85
BCC Lady Traveler 13B 93

We purchased this bull for his masculinity, thickness, depth of body, and muscle definition. He is an older time tested type genetic package. He is a calving ease bull.





Lot 705 **AAR REMEDY 705**
 Reg. No. 18883794 Tattoo: 705-17 DOB:01/21/17
 Baldridge Kaboom K243 KCF
 Connealy Thunder Parka of Conanga 241
 CTS REMEDY 1T01 L T 598 Bando 9074
 CTS 7V03 Bellemere Maid 9T02 SVA Rita 7V03 of 1407 502
 Granger Pioneer 052
 Silver State Pioneer 338 Silver State Queen 853
BARBARAMERE 586 AAR Mid Performer 608
 608 Barbaramere 1150 A A R Barbaramere 292 A A R

Ultrasound	
Ribeye Ratio -	
% IMF Ratio -	
Video Day Wt -	
Carcass EPDs	
EPD ACC	
Marb: I + 0.31	0.05
REA: I + 0.51	0.05
FAT: I - 0.009	0.05

BW EPD	WW EPD	MILK EPD	YW EPD	Actual BW	205 Day Weight	205 Day Ratio	365 Day Weight	365 Day Ratio	Actual Scrotal
I + 2.4	I + 56	I + 28	I + 102	84	663	110	946	105	

Lot 701 **AAR ELEMENT 701**
 Reg. No. 18884642 Tattoo: 701-17 DOB:01/17/17
 Poss Total Impact 745
 Poss Easy Impact 0119
 Poss Elmaretta 736
POSS ELEMENT 215 ALC Big Eye D09N
 Poss Erica 004 Poss Erica 814
 Q A S Traveler 23-4
 V D A R Traveler 455 V D A R Kathy 16
BARBARAMERE 554 AAR Sitz Dash 10277
 Barbaramere 3050 AAR Barbaramere 362 A A R

Ultrasound	
Ribeye Ratio -	
% IMF Ratio -	
Video Day Wt -	
Carcass EPDs	
EPD ACC	
Marb: I + 0.45	0.05
REA: I + 0.31	0.05
FAT: I + 0.047	0.05

BW EPD	WW EPD	MILK EPD	YW EPD	Actual BW	205 Day Weight	205 Day Ratio	365 Day Weight	365 Day Ratio	Actual Scrotal
I - 0.5	I + 54	I + 23	I + 81	78	692	114	967	107	

Dam Production: 2 WR 110, 1 YR 107



Lot 707 **AAR UNO 707**
 Reg. No. 18887214 Tattoo: 707-17 DOB:01/21/17
 Connealy Onward
 Sitz Upward 307R Sitz Henrietta Pride 81M
C C A Uno 049 Sitz Alliance 6595
 Mytty Countess 906 Baldridge Countess 357
 Sitz Traveler 8180
 S A V Final Answer 0035 S A V Emulous 8145
Teresa 958 A A R N Bar Emulation EXT
 EXT Teresa 167 A A R Teresa 864 A A R

Ultrasound	
Ribeye Ratio -	
% IMF Ratio -	
Video Day Wt -	
Carcass EPDs	
EPD ACC	
Marb: I + 0.34	0.05
REA: I + 0.43	0.05
FAT: I + 0.023	0.05

BW EPD	WW EPD	MILK EPD	YW EPD	Actual BW	205 Day Weight	205 Day Ratio	365 Day Weight	365 Day Ratio	Actual Scrotal
I + 1.8	I + 53	I + 27	I + 84	87	690	107	976	108	

Dam Production: 8 WR 104, 6 YR 105

Lot 704 **AAR ADVANCE 704**
 Reg. No. 18884626 Tattoo: 704-17 DOB:01/20/17
 O C C Juneau 807J
 Koupal Juneau 797 Koupals Elba 187
Koupal Advance 28 S A V Initiative 4406
 Koupal Ebonette 734 Koupals Ebonette 545
 Q A S Traveler 23-4
 V D A R Traveler 455 V D A R Kathy 16
BARBARMERE 578 AAR B/R New Design 323-9150
 Barbaramere 554 A A R Barbaramere 355 A A R

Ultrasound	
Ribeye Ratio -	
% IMF Ratio -	
Video Day Wt -	
Carcass EPDs	
EPD ACC	
Marb: I + 0.54	0.05
REA: I + 0.49	0.05
FAT: I + 0.015	0.05

BW EPD	WW EPD	MILK EPD	YW EPD	Actual BW	205 Day Weight	205 Day Ratio	365 Day Weight	365 Day Ratio	Actual Scrotal
I - 1.2	I + 54	I + 31	I + 81	74	648	107	979	109	

Dam Production: 2 WR 104, 1 YR 109



Lot 709	AAR REMEDY 709		Reg. No. 18883803	Tattoo: 709-17	DOB:01/22/17				
Connealy Thunder		Baldridge Kaboom K243 KCF							
Parka of Conanga 241		Ultrasound							
CTS REMEDY 1T01		Ribeye Ratio -							
L T 598 Bando 9074		% IMF Ratio -							
CTS 7V03 Bellemeire Maid 9T02		Video Day Wt -							
SVA Rita 7V03 of 1407 502		Carcass EPDs							
Koupal Juneau 797		EPD ACC							
Koupal Advance 28		Marb: I + 0.49 0.05							
Koupal Ebonette 734		REA: I + 0.63 0.05							
ADVANCE TERESSA 5051 AAR		FAT: I - 0.010 0.05							
Sitz New Design 349M									
New Teressa 764 A A R									
EXT Teressa 167 A A R									
BW	WW	MILK	YW	Actual	205 Day	205 Day	365 Day	365 Day	Actual
EPD	EPD	EPD	EPD	BW	Weight	Ratio	Weight	Ratio	Scrotal
I + 2.0	I + 62	I + 33	I + 110	88	702	116	1062	118	

Lot 715	AAR SURE SHOT 715		Reg. No. 18883807	Tattoo: 715-17	DOB:01/27/17				
Mogck Sure Shot		Mytty In Focus							
Mogck Black Lass 2065		Ultrasound							
AAR Sure Shot 3012		Ribeye Ratio -							
B/R New Design 036		% IMF Ratio -							
Barbaramere 080 A A R		Video Day Wt -							
Barbaramere 773 A A R		Carcass EPDs							
Bon View New Design 208		EPD ACC							
TC Total 410		Marb: I + 0.33 0.05							
TC Erica Eileen 2047		REA: I + 0.43 0.05							
Barbaramere 890 A A R		FAT: I + 0.008 0.05							
Jolly R Cash Flow 9060									
Barbaramere 881 A A R									
Ext Barbaramere 475 A A R									
BW	WW	MILK	YW	Actual	205 Day	205 Day	365 Day	365 Day	Actual
EPD	EPD	EPD	EPD	BW	Weight	Ratio	Weight	Ratio	Scrotal
I + 1.3	I + 55	I + 26	I + 88	72	681	106	966	107	

Dam Production: 7 WR 104, 6 YR 103

Lot 710	AAR RESOLUTE 710		Reg. No. 18885349	Tattoo: 710-17	DOB:01/22/17				
K C F Bennett Absolute		S A V Final Answer 0035							
Thomas Miss Lucy 5152		Ultrasound							
R B Resolute 1844		Ribeye Ratio -							
Mytty In Focus		% IMF Ratio -							
R B Lady Focus 303-844		Video Day Wt -							
B A Lady 6807 303		Carcass EPDs							
O C C Juneau 807J		EPD ACC							
McD AAR Juneau 944		Marb: I + 0.54 0.05							
Mid Ambushess 354		REA: I + 0.49 0.05							
BARBARAMERE 5052 AAR		FAT: I + 0.034 0.05							
Nichols Extra K205									
Barbaramere Extra 975 A A R									
Barbaramere 573 A A R									
BW	WW	MILK	YW	Actual	205 Day	205 Day	365 Day	365 Day	Actual
EPD	EPD	EPD	EPD	BW	Weight	Ratio	Weight	Ratio	Scrotal
I - 0.3	I + 46	I + 23	I + 86	74	568	94	826	92	

Dam Production: 2 WR 97, 1 YR 92



Lot 713	AAR 3012 SURE SHOT 713		Reg. No. 18883805	Tattoo: 713-17	DOB:01/24/17				
Mogck Sure Shot		Mytty In Focus							
Mogck Black Lass 2065		Ultrasound							
AAR Sure Shot 3012		Ribeye Ratio -							
B/R New Design 036		% IMF Ratio -							
Barbaramere 080 A A R		Video Day Wt -							
Barbaramere 773 A A R		Carcass EPDs							
Schurrtop American 5846		EPD ACC							
Mid Performer 608		Marb: I + 0.30 0.05							
Belles Shoshoness 155		REA: I + 0.46 0.05							
Barbaramere 294 AAR		FAT: I + 0.016 0.05							
Rito 616 of 4820 6807									
616 Barbaramere 652 A A R									
Barbaramere 881 A A R									
BW	WW	MILK	YW	Actual	205 Day	205 Day	365 Day	365 Day	Actual
EPD	EPD	EPD	EPD	BW	Weight	Ratio	Weight	Ratio	Scrotal
I + 3.6	I + 53	I + 29	I + 84	92	668	104	916	102	

Dam Production: 5 WR 104, 4 YR 103

Lot 718	AAR CAPITALIST 718		Reg. No. 18887383	Tattoo: 718-17	DOB:01/27/17				
Connealy Capitalist 028		S A V Final Answer 0035							
Prides Pita of Conanga 8821		Ultrasound							
AB-LVS Capitalist 4507		Ribeye Ratio -							
WMR Timeless 458		% IMF Ratio -							
Ab-Lvs Emma 096		Video Day Wt -							
Ox Bow Emma E396		Carcass EPDs							
Sitz Upward 307R		EPD ACC							
Sitz Dash 10277		Marb: I + 0.49 0.05							
Sitz Everelda Entense 2665		REA: I + 0.50 0.05							
Ox Bow Emma E 190		FAT: I + 0.030 0.05							
G D A R Traveler 561									
Ox Bow Emma E 3107									
Ox Bow Emma E 685									
BW	WW	MILK	YW	Actual	205 Day	205 Day	365 Day	365 Day	Actual
EPD	EPD	EPD	EPD	BW	Weight	Ratio	Weight	Ratio	Scrotal
I + 0.3	I + 52	I + 20	I + 100	77	617	96	926	103	

Dam Production: 6 WR 97, 5 YR 104

Lot 714	AAR RENEGADE 714		Reg. No. 18883806	Tattoo: 714-17	DOB:01/25/17				
R R Rito 707		Ideal 3407 of 1418 076							
Rito 707 of Ideal 3407 7075		Ultrasound							
FAIRVIEW RENEGADE 4166		Ribeye Ratio -							
Leachman Right Time		% IMF Ratio -							
FairView Lady Traveler X85		Video Day Wt -							
B C C Lady Traveler 13B 93		Carcass EPDs							
O C C Juneau 807J		EPD ACC							
Mid Performer 036		Marb: I + 0.06 0.05							
Mid Shoshoness 312		REA: I + 0.25 0.05							
JUNEAU ROSE 5059 AAR		FAT: I + 0.017 0.05							
AAR Hero 011									
HERO ROSE 2167 AAR									
Precision 172 Rose 689 A A R									
BW	WW	MILK	YW	Actual	205 Day	205 Day	365 Day	365 Day	Actual
EPD	EPD	EPD	EPD	BW	Weight	Ratio	Weight	Ratio	Scrotal
I + 0.3	I + 39	I + 20	I + 64	72	579	96	845	94	

Dam Production: 1 WR 96, 1 YR 94

Lot 720	AAR MATRIX 720		Reg. No. 18884482	Tattoo: 720-17	DOB:01/28/17				
D H D Traveler 6807		O C C Emblazon 854E							
Dixie Erica of C H 1019		Ultrasound							
B C Matrix 4132		Ribeye Ratio -							
N Bar Emulation EXT		% IMF Ratio -							
CAF Pure Pride Ext 99		Video Day Wt -							
Gibbet Hill Pure Pride CF 90		Carcass EPDs							
B/R New Design 036		EPD ACC							
Bon View New Design 878		Marb: I + 0.28 0.05							
Bon View Gammer 85		REA: I + 0.27 0.05							
Barbaramere 571 A A R		FAT: I + 0.032 0.05							
A A R 6807 Trav 802									
Barbaramere 277 A A R									
Barbaramere 063 A A R									
BW	WW	MILK	YW	Actual	205 Day	205 Day	365 Day	365 Day	Actual
EPD	EPD	EPD	EPD	BW	Weight	Ratio	Weight	Ratio	Scrotal
I + 3.7	I + 43	I + 21	I + 79	95	608	95	907	101	

Dam Production: 11 WR 101, 9 YR 101



Lot 722 **AAR UNO 722**
 Reg. No. 18887209 Tattoo: 722-17 DOB:01/28/17
 Connealy Onward
 Sitz Upward 307R Sitz Henrietta Pride 81M
C C A Uno 049
 Mytty Countess 906 Sitz Alliance 6595
 Baldridge Countess 357
 O C C Juneau 807J
 McD AAR Juneau 944 Mid Ambushess 354
Barbaramere 270 AAR
 Barbaramere Extra 079 A A R A A R
 Barbaramere 263 A A R

Ultrasound	
Ribeye Ratio -	
% IMF Ratio -	
Video Day Wt -	
Carcass EPDs	
EPD	ACC
Marb: I + 0.36	0.05
REA: I + 0.43	0.05
FAT: I + 0.028	0.05

BW EPD	WW EPD	MILK EPD	YW EPD	Actual BW	205 Day Weight	205 Day Ratio	365 Day Weight	365 Day Ratio	Actual Scrotal
I + 0.2	I + 49	I + 29	I + 85	80	650	101	901	100	

Dam Production: 5 WR 103, 4 YR 103



Lot 723 **AAR RESOLUTE 723**
 Reg. No. 18885348 Tattoo: 723-17 DOB:01/28/17
 S A V Final Answer 0035
 K C F Bennett Absolute Thomas Miss Lucy 5152
R B Resolute 1844
 R B Lady Focus 303-844 Mytty In Focus
 B A Lady 6807 303
 O C C Juneau 807J
 McD AAR Juneau 944 Mid Ambushess 354
TERESSA 5061 AAR
 Teressa 573 A A R G A R Retail Product
 Div Teressa 877 A A R

Ultrasound	
Ribeye Ratio -	
% IMF Ratio -	
Video Day Wt -	
Carcass EPDs	
EPD	ACC
Marb: I + 0.52	0.05
REA: I + 0.42	0.05
FAT: I + 0.040	0.05

BW EPD	WW EPD	MILK EPD	YW EPD	Actual BW	205 Day Weight	205 Day Ratio	365 Day Weight	365 Day Ratio	Actual Scrotal
I + 0.8	I + 51	I + 23	I + 91	76	594	98	944	105	

Dam Production: 2 WR 99, 1 YR 105

Lot 727 **AAR Capitalist 727**
 Reg. No. 18887379 Tattoo: 727-17 DOB:01/31/17
 S A V Final Answer 0035
 Connealy Capitalist 028 Prides Pita of Conanga 8821
AB-LVS Capitalist 4507
 Ab-Lvs Emma 096 WMR Timeless 458
 Ox Bow Emma E396
 HA Future Direction 3540
 HA Program 5652 HA Blackcap Lady 2782
Program Teressa 3053 AAR
 Travelin Teressa 8053 A A R V D A R Traveler 455
 Teressa 466 A A R

Ultrasound	
Ribeye Ratio -	
% IMF Ratio -	
Video Day Wt -	
Carcass EPDs	
EPD	ACC
Marb: I + 0.51	0.05
REA: I + 0.51	0.05
FAT: I + 0.008	0.05

BW EPD	WW EPD	MILK EPD	YW EPD	Actual BW	205 Day Weight	205 Day Ratio	365 Day Weight	365 Day Ratio	Actual Scrotal
-0.3	+56	+23	+102	73	633	98	977	108	

Dam Production: 4 WR 103, 3 YR 105



Lot 729 **AAR CAPITALIST 729**
 Reg. No. 18887384 Tattoo: 729-17 DOB:01/31/17
 S A V Final Answer 0035
 Connealy Capitalist 028 Prides Pita of Conanga 8821
AB-LVS Capitalist 4507
 Ab-Lvs Emma 096 WMR Timeless 458
 Ox Bow Emma E396
 O C C Emblazon 854E
 B C Mid Emblazon 854E 702
 Gibbet Hill Mignonne E37
Teressa 0166 A A R
 New Teressa 766 A A R Sitz New Design 349M
 Teressa 573 A A R

Ultrasound	
Ribeye Ratio -	
% IMF Ratio -	
Video Day Wt -	
Carcass EPDs	
EPD	ACC
Marb: I + 0.48	0.05
REA: I + 0.56	0.05
FAT: I + 0.014	0.05

BW EPD	WW EPD	MILK EPD	YW EPD	Actual BW	205 Day Weight	205 Day Ratio	365 Day Weight	365 Day Ratio	Actual Scrotal
I + 0.7	I + 61	I + 25	I + 104	84	710	110	976	108	

Dam Production: 7 WR 108, 5 YR 107





Lot 734	Reg. No. 18887211	Tattoo: 734-17	DOB:02/02/17						
Sitz Upward 307R Sitz Henrietta Pride 81M									
C C A Uno 049	Sitz Alliance 6595								
Mytty Countess 906 Baldrige Countess 357 G A R Expectation 4915									
Rito 2X15 of Rita 8Z22 EXP Rita 8Z22 of 6K24 Cal T									
2X15 Rose 1053 A A R	Rito 616 of 4B20 6807								
Rito 616 Rose 954 A A R Rose Design 755 A A R									
BW	WW	MILK	YW	Actual	205 Day	205 Day	365 Day	365 Day	Actual
EPD	EPD	EPD	EPD	BW	Weight	Ratio	Weight	Ratio	Scrotal
-1.0	+43	+31	+83	72	624	97	877	97	

Dam Production: 6 WR 101, 5 YR 98

Lot 730	Reg. No. 18887210	Tattoo: 730-17	DOB:01/31/17						
Sitz Upward 307R Sitz Henrietta Pride 81M									
C C A Uno 049	Sitz Alliance 6595								
Mytty Countess 906 Baldrige Countess 357 O C C Kanga 886K									
O C C Prototype 847P O C C Dixie Erica 867K									
Juanadamere 178 A A R	Sitz Value 7097								
Glaus Juanadamere 218 Miss Power Trend 203									
BW	WW	MILK	YW	Actual	205 Day	205 Day	365 Day	365 Day	Actual
EPD	EPD	EPD	EPD	BW	Weight	Ratio	Weight	Ratio	Scrotal
+1.2	+41	+25	+76	80	591	92	893	99	

Dam Production: 6 WR 100, 4 YR 96

Lot 735	Reg. No. 18887387	Tattoo: 735-17	DOB:02/03/17						
S A V Final Answer 0035 Connealy Capitalist 028 Prides Pita of Conanga 8821									
AB-LVS Capitalist 4507	WMR Timeless 458								
Ab-Lvs Emma 096 Ox Bow Emma E396 Q A S Traveler 23-4									
V D A R Traveler 455 V D A R Kathy 16									
Evergreen Traveler 874 A A R	A A R Extra 814								
Lady Extra 670 A A R Evergreen 391 A A R									
BW	WW	MILK	YW	Actual	205 Day	205 Day	365 Day	365 Day	Actual
EPD	EPD	EPD	EPD	BW	Weight	Ratio	Weight	Ratio	Scrotal
+1.9	+52	+21	+89	87	679	106	1063	118	

Dam Production: 9 WR 97, 5 YR 105

Lot 731	Reg. No. 18883810	Tattoo: 731-17	DOB:02/01/17						
Connealy Thunder Baldrige Kaboom K243 KCF Parka of Conanga 241									
CTS REMEDY 1T01	L T 598 Bando 9074								
CTS 7V03 Bellemere Maid 9T02 SVA Rita 7V03 of 1407 502 C H Quantum 6247									
Cole Creek Black Cedar 46P Cole Creek Clova Juanada 67									
Barbara Perfection 2058 AAR	J L B Exacto 416								
Barbara Perfection 158 A A R Barbar Perfecting 553 A A R									
BW	WW	MILK	YW	Actual	205 Day	205 Day	365 Day	365 Day	Actual
EPD	EPD	EPD	EPD	BW	Weight	Ratio	Weight	Ratio	Scrotal
+0.1	+46	+26	+89	84	666	104	975	109	

Dam Production: 4 WR 103, 2 YR 109

Lot 736	Reg. No. 18883811	Tattoo: 736-17	DOB:02/03/17						
Mogck Sure Shot Mytty In Focus Mogck Black Lass 2065									
AAR Sure Shot 3012	B/R New Design 036								
Barbaramere 080 A A R Barbaramere 773 A A R Sitz Upward 307R									
Sitz Dash 10277 Sitz Everelda Entense 2665									
Barbaramere 3050 AAR	Rito 616 of 4B20 6807								
Barbaramere 362 A A R Ambush Barbaramere 657 A A R									
BW	WW	MILK	YW	Actual	205 Day	205 Day	365 Day	365 Day	Actual
EPD	EPD	EPD	EPD	BW	Weight	Ratio	Weight	Ratio	Scrotal
-0.4	+46	+25	+82	76	601	93	897	99	

Dam Production: 4 WR 96, 2 YR 99

Lot 733	Reg. No. 18887385	Tattoo: 733-17	DOB:02/02/17						
Connealy Capitalist 028 Prides Pita of Conanga 8821									
AB-LVS Capitalist 4507	WMR Timeless 458								
Ab-Lvs Emma 096 Ox Bow Emma E396 Sitz Rainmaker 8987									
Sitz Rainmaker 6169 Sitz Barbaramere Jet 3007									
Glaus Blackcap 838	D H D Traveler 6807								
N F C Blackcap 8608 Leachman Blackcap 0037									
BW	WW	MILK	YW	Actual	205 Day	205 Day	365 Day	365 Day	Actual
EPD	EPD	EPD	EPD	BW	Weight	Ratio	Weight	Ratio	Scrotal
+2.6	+60	+21	+104	88	690	107	970	107	

Dam Production: 8 WR 105, 5 YR 103

Lot 737	Reg. No. 18887221	Tattoo: 737-17	DOB:02/03/17						
Connealy Onward Sitz Upward 307R Sitz Henrietta Pride 81M									
C C A Uno 049	Sitz Alliance 6595								
Mytty Countess 906 Baldrige Countess 357 D H D Traveler 6807									
Rito 616 of 4B20 6807 Rita 4B20 of 0FB1 Bando									
Barbaramere 363 A A R	Rockn D Ambush 1531								
Rck'n Barbaramere 166 A A R Barbaramere 963 A A R									
BW	WW	MILK	YW	Actual	205 Day	205 Day	365 Day	365 Day	Actual
EPD	EPD	EPD	EPD	BW	Weight	Ratio	Weight	Ratio	Scrotal
-0.1	+54	+26	+80	80	701	110	962	111	

Dam Production: 14 WR 104, 11 YR 103

Lot 740 **AAR 112 RITO 740**
 Reg. No. 18883812 Tattoo: 740-17 DOB:02/04/17
 D H D Traveler 6807
 Rito 616 of 4B20 6807 Rita 4B20 of 0FB1 Bando
Rito 112 of 2536 Rito 616
 G A R Precision 2536 G A R Precision 1680
 G A R Ext 2104
 Bon View New Design 1407
 Sitz New Design 349M
 Sitz Pride 166K
Ida Design 757 A A R
 Leachman Right Time
 Right Time Ida 275 A A R
 Cash Flow Ida 853 A A R

Ultrasound	
Ribeye Ratio -	
% IMF Ratio -	
Video Day Wt -	
Carcass EPDs	
EPD	ACC
Marb: I + 0.54	0.05
REA: I + 0.15	0.05
FAT: I -0.006	0.05

BW EPD	WW EPD	MILK EPD	YW EPD	Actual BW	205 Day Weight	205 Day Ratio	365 Day Weight	365 Day Ratio	Actual Scrotal
I -0.6	I + 42	I + 24	I + 74	76	622	97	854	95	

Dam Production: 10 WR 99, 6 YR 97



Lot 741 **AAR 3012 SURE SHOT 741**
 Reg. No. 18883813 Tattoo: 741-17 DOB:02/05/17
 Mytty In Focus
 Mogck Sure Shot Mogck Black Lass 2065
AAR Sure Shot 3012
 B/R New Design 036
 Barbaramere 080 A A R Barbaramere 773 A A R
 Schurrtop American 5846
 Mid Performer 608
 Belles Shoshoness 155
American Elite 1090 Aar
 LRA Foresight 26C
 Foresight Elite 673 A A R
 Traveler Elite 870 A A R

Ultrasound	
Ribeye Ratio -	
% IMF Ratio -	
Video Day Wt -	
Carcass EPDs	
EPD	ACC
Marb: I + 0.42	0.05
REA: I + 0.52	0.05
FAT: I + 0.005	0.05

BW EPD	WW EPD	MILK EPD	YW EPD	Actual BW	205 Day Weight	205 Day Ratio	365 Day Weight	365 Day Ratio	Actual Scrotal
I + 4.6	I + 47	I + 27	I + 73	103	669	104	944	105	

Dam Production: 6 WR 102, 4 YR 98

Lot 744 **AAR RENEGADE 744**
 Reg. No. 18883814 Tattoo: 744-17 DOB:02/08/17
 R R Rito 707
 Rito 707 of Ideal 3407 7075
 Ideal 3407 of 1418 076
FAIRVIEW RENEGADE 4166
 Leachman Right Time
 FairView Lady Traveler X85
 B C C Lady Traveler 13B 93
 Hero 6267 of R R 2418
 H A Image Maker 0415
 H A Rito Blackcap 9038
Barbaramere 894 A A R
 B C C Bushwacker 41-93
 Barbaramere 460 A A R
 Barbaramere 172 A A R

Ultrasound	
Ribeye Ratio -	
% IMF Ratio -	
Video Day Wt -	
Carcass EPDs	
EPD	ACC
Marb: I + 0.04	0.05
REA: I + 0.16	0.05
FAT: I + 0.014	0.05

BW EPD	WW EPD	MILK EPD	YW EPD	Actual BW	205 Day Weight	205 Day Ratio	365 Day Weight	365 Day Ratio	Actual Scrotal
I -0.6	I + 41	I + 24	I + 61	76	643	100	864	96	

Dam Production: 9 WR 100, 6 YR 102

Lot 747 **AAR REMEDY 747**
 Reg. No. 18883816 Tattoo: 747-17 DOB:02/11/17
 Baldridge Kaboom K243 KCF
 Connealy Thunder Parka of Conanga 241
CTS REMEDY 1T01
 L T 598 Bando 9074
 CTS 7V03 Bellemere Maid 9T02
 SVA Rita 7V03 of 1407 502
 DDA Emblazon 28A
 DDA Sure Enough 6D
 DDA Mary 156
Blackcap Pride 791
 C H Quantum 3330
 Glaus Blackcap Pride 113
 A R F Lady Traveler 93

Ultrasound	
Ribeye Ratio -	
% IMF Ratio -	
Video Day Wt -	
Carcass EPDs	
EPD	ACC
Marb: I + 0.28	0.05
REA: I + 0.50	0.05
FAT: I -0.012	0.05

BW EPD	WW EPD	MILK EPD	YW EPD	Actual BW	205 Day Weight	205 Day Ratio	365 Day Weight	365 Day Ratio	Actual Scrotal
I + 0.1	I + 45	I + 25	I + 88	82	633	98	862	95	

Dam Production: 10 WR 101, 8 YR 103

Lot 749 **AAR RENEGADE 749**
 Reg. No. 18883818 Tattoo: 749-17 DOB:02/12/17
 R R Rito 707
 Rito 707 of Ideal 3407 7075
 Ideal 3407 of 1418 076
FAIRVIEW RENEGADE 4166
 Leachman Right Time
 FairView Lady Traveler X85
 B C C Lady Traveler 13B 93
 Bon View New Design 1407
 Sitz New Design 349M
 Sitz Pride 166K
Barbaramere 761 A A R
 A A R Extra 814
 Barbaramere 476 A A R
 Barbaramere 189 A A R

Ultrasound	
Ribeye Ratio -	
% IMF Ratio -	
Video Day Wt -	
Carcass EPDs	
EPD	ACC
Marb: I + 0.15	0.05
REA: I + 0.20	0.05
FAT: I + 0.019	0.05

BW EPD	WW EPD	MILK EPD	YW EPD	Actual BW	205 Day Weight	205 Day Ratio	365 Day Weight	365 Day Ratio	Actual Scrotal
I -0.3	I + 42	I + 25	I + 66	73	669	104	853	95	

Dam Production: 10 WR 103, 8 YR 101

Lot 7001 **AAR TOTAL 7001**
 Reg. No. 18883772 Tattoo: 7001-17 DOB:02/12/17
 B/R New Design 036
 Bon View New Design 208
 Bon View Erica 443
TC Total 410
 Twin Valley Precision E161
 TC Erica Eileen 2047
 TC Erica Eileen 5116
 O C C Focus 813F
 O C C Homer 650H
 O C C Dixie Erica 816B
Homer Lass 969 A A R
 S A V Final Answer 0035
 Final Lass 751 A A R
 112 Lass 563 A A R

Ultrasound	
Ribeye Ratio -	
% IMF Ratio -	
Video Day Wt -	
Carcass EPDs	
EPD	ACC
Marb: I + 0.51	0.05
REA: I + 0.48	0.05
FAT: I -0.015	0.05

BW EPD	WW EPD	MILK EPD	YW EPD	Actual BW	205 Day Weight	205 Day Ratio	365 Day Weight	365 Day Ratio	Actual Scrotal
I + 2.2	I + 59	I + 23	I + 92	90	743	116	972	108	

Dam Production: 8 WR 108, 6 YR 105





Lot 7007 **AAR PERFORMER 7007**
 Reg. No. 18883776 Tattoo: 7007-17 DOB:02/18/17
 Schafer 21st Century
 Schafer 21C of 514 1005 Chase 878 Lady Bando 07-514
McD Performer 472 B C Mid Emblazon 854E 702
 Mid Eldorene 6511 Mid Eldorene 384
 Cole Creek Cedar Ridge 1V Cole Creek Black Cedar 46P
 Cole Creek Clovanada 49S
Cedar Lass367AAR Connealy Freightliner
 Freightler Lass 184 A A R A A R Cap Lass 163

Ultrasound	
Ribeye Ratio -	
% IMF Ratio -	
Video Day Wt -	
Carcass EPDs	
EPD ACC	
Marb: I + 0.23	0.05
REA: I + 0.21	0.05
FAT: I + 0.023	0.05

BW EPD	WW EPD	MILK EPD	YW EPD	Actual BW	205 Day Weight	205 Day Ratio	365 Day Weight	365 Day Ratio	Actual Scrotal
I + 1.2	I + 43	I + 27	I + 75	90	661	103	967	107	

Dam Production: 4 WR 105, 3 YR 103

Lot 7002 **AAR RENEGADE 7002**
 Reg. No. 18883773 Tattoo: 7002-17 DOB:02/13/17
 R R Rito 707
 Rito 707 of Ideal 3407 7075
 Ideal 3407 of 1418 076
FAIRVIEW RENEGADE 4166 Leachman Right Time
 FairView Lady Traveler X85 B C C Lady Traveler 13B 93
 Hero 6267 of R R 2418
 H A Image Maker 0415 H A Rito Blackcap 9038
Pride Maker 0150 A A R DDA Sure Enough 6D
 Blackcap Pride 791 Glaus Blackcap Pride 113

Ultrasound	
Ribeye Ratio -	
% IMF Ratio -	
Video Day Wt -	
Carcass EPDs	
EPD ACC	
Marb: I - 0.10	0.05
REA: I + 0.28	0.05
FAT: I + 0.008	0.05

BW EPD	WW EPD	MILK EPD	YW EPD	Actual BW	205 Day Weight	205 Day Ratio	365 Day Weight	365 Day Ratio	Actual Scrotal
I - 0.3	I + 48	I + 23	I + 74	81	670	104	889	99	

Dam Production: 7 WR 102, 4 YR 105



Lot 7008 **AAR PERFORMER 7008**
 Reg. No. 18883777 Tattoo: 7008-17 DOB:02/18/17
 Schafer 21st Century
 Schafer 21C of 514 1005 Chase 878 Lady Bando 07-514
McD Performer 472 B C Mid Emblazon 854E 702
 Mid Eldorene 6511 Mid Eldorene 384
 Betro of Classlochie
 Dunlouse Jipsej Earl E161 Dunlouse Jipsej Clova C095
Barbaramere 3059 AAR S A V 8180 Traveler 004
 004 Barbaramere 665 A A R Barbaramere 251 A A R

Ultrasound	
Ribeye Ratio -	
% IMF Ratio -	
Video Day Wt -	
Carcass EPDs	
EPD ACC	
Marb: I + 0.08	0.05
REA: I + 0.06	0.05
FAT: I + 0.024	0.05

BW EPD	WW EPD	MILK EPD	YW EPD	Actual BW	205 Day Weight	205 Day Ratio	365 Day Weight	365 Day Ratio	Actual Scrotal
I - 1.3	I + 36	I + 27	I + 52	74	660	103	906	101	

Dam Production: 4 WR 99, 3 YR 92



Lot 7006 **AAR RENEGADE 7006**
 Reg. No. 18883775 Tattoo: 7006-17 DOB:02/17/17
 R R Rito 707
 Rito 707 of Ideal 3407 7075
 Ideal 3407 of 1418 076
FAIRVIEW RENEGADE 4166 Leachman Right Time
 FairView Lady Traveler X85 B C C Lady Traveler 13B 93
 O C C Juneau 807J
 McD AAR Juneau 944 Mid Ambushess 354
Juneau Ida 4150 AAR B C Mid Emblazon 854E 702
 Emblazon Ida 057 A A R Image Ida 870 A A R

Ultrasound	
Ribeye Ratio -	
% IMF Ratio -	
Video Day Wt -	
Carcass EPDs	
EPD ACC	
Marb: I + 0.07	0.05
REA: I + 0.41	0.05
FAT: I + 0.021	0.05

BW EPD	WW EPD	MILK EPD	YW EPD	Actual BW	205 Day Weight	205 Day Ratio	365 Day Weight	365 Day Ratio	Actual Scrotal
I + 1.4	I + 44	I + 24	I + 70	84	659	102	888	98	

Dam Production: 3 WR 104, 1 YR 98

Lot 7012 **AAR 3012 SURE SHOT 7012**
 Reg. No. 18883780 Tattoo: 7012-17 DOB:02/24/17
 Mytty In Focus
 Mogck Sure Shot Mogck Black Lass 2065
AAR Sure Shot 3012 B/R New Design 036
 Barbaramere 080 A A R Barbaramere 773 A A R
 S S Objective T510 0T26
 Sydgen Mandate 6079 SydGen Gina 4235
Barbara Perfection 2078 AAR G 13 Structure
 Barbara Perfection 672 A A R Barbar Perfecting 553 A A R

Ultrasound	
Ribeye Ratio -	
% IMF Ratio -	
Video Day Wt -	
Carcass EPDs	
EPD ACC	
Marb: I + 0.49	0.05
REA: I + 0.35	0.05
FAT: I + 0.012	0.05

BW EPD	WW EPD	MILK EPD	YW EPD	Actual BW	205 Day Weight	205 Day Ratio	365 Day Weight	365 Day Ratio	Actual Scrotal
I + 3.4	I + 51	I + 25	I + 83	94	658	102	906	100	

Dam Production: 4 WR 102, 3 YR 102

Lot 7014 **AAR RENEGADE 7014**
 Reg. No. 18883781 Tattoo: 7014-17 DOB:02/26/17
 R R Rito 707
 Rito 707 of Ideal 3407 7075
 Ideal 3407 of 1418 076

FAIRVIEW RENEGADE 4166
 Leachman Right Time
 FairView Lady Traveler X85
 B C C Lady Traveler 13B 93
 S Alliance 3313

S Chisum 6175
 S Gloria 464

Chisum Blackbird 374 AAR
 O C C Homer 650H
 Glaus Blackbird 807
 Glaus Blackbird 316

Ultrasound					
Ribeye Ratio -					
% IMF Ratio -					
Video Day Wt -					
Carcass EPDs					
EPD		ACC			
Marb:	I -0.02	0.05			
REA:	I +0.36	0.05			
FAT:	I +0.018	0.05			

BW EPD	WW EPD	MILK EPD	YW EPD	Actual BW	205 Day Weight	205 Day Ratio	365 Day Weight	365 Day Ratio	Actual Scrotal
I +0.4	I +48	I +21	I +77	74	668	104	937	104	

Dam Production: 4 WR 101, 2 YR 107



Lot 7022 **AAR CONVERTABULL 7022**
 Reg. No. 18883785 Tattoo: 7022-17 DOB:03/05/17
 Rito 112 of 2536 Rito 616
 Willekes Converter 4402 9
 Willekes Lady of 410

AAR Convertabull 401
 Cole Creek Black Cedar 46P
 Barbara Perfection 2058 AAR
 Barbara Perfection 158 A A R
 Rito 616 of 4B20 6807

Rito 112 of 2536 Rito 616
 G A R Precision 2536

112 Lass 563 A A R
 Krugerrand of Donamere 490
 Krugerrand Lass 279 A A R
 A A R Cap Lass 163

Ultrasound					
Ribeye Ratio -					
% IMF Ratio -					
Video Day Wt -					
Carcass EPDs					
EPD		ACC			
Marb:	I +0.37	0.05			
REA:	I +0.31	0.05			
FAT:	I -0.017	0.05			

BW EPD	WW EPD	MILK EPD	YW EPD	Actual BW	205 Day Weight	205 Day Ratio	365 Day Weight	365 Day Ratio	Actual Scrotal
I +0.7	I +54	I +23	I +80	84	694	109	932	107	

Dam Production: 12 WR 105, 10 YR 103



Lot 7018 **AAR 522 UNO 7018**
 Reg. No. 18883782 Tattoo: 7018-17 DOB:02/28/17
 C C A Uno 049
 Mytty Countess 906

AAR UNO 522
 GDAR Game Day 449
 Evergreen 990 A A R
 Lady Extra 670 A A R
 DDA Emblazon 28A

DDA Sure Enough 6D
 DDA Mary 156

Barbara Perfection 167 A A R
 S A V 8180 Traveler 004
 Barbara Perfection 774 A A R
 Barbara Perfection 273 A A R

Ultrasound					
Ribeye Ratio -					
% IMF Ratio -					
Video Day Wt -					
Carcass EPDs					
EPD		ACC			
Marb:	I +0.33	0.05			
REA:	I +0.31	0.05			
FAT:	I +0.035	0.05			

BW EPD	WW EPD	MILK EPD	YW EPD	Actual BW	205 Day Weight	205 Day Ratio	365 Day Weight	365 Day Ratio	Actual Scrotal
I +46	I +24	I +73		71	656	102	893	99	

Dam Production: 6 WR 99, 4 YR 99

Lot 7024 **AAR RENEGADE 7024**
 Reg. No. 18883786 Tattoo: 7024-17 DOB:03/06/17
 R R Rito 707
 Rito 707 of Ideal 3407 7075
 Ideal 3407 of 1418 076

FAIRVIEW RENEGADE 4166
 Leachman Right Time
 FairView Lady Traveler X85
 B C C Lady Traveler 13B 93
 O C C Juneau 807J

McD AAR Juneau 944
 Mid Ambushess 354

Barbaramere 4094 AAR
 Nichols Extra K205
 Barbaramere Extra 975 A A R
 Barbaramere 573 A A R

Ultrasound					
Ribeye Ratio -					
% IMF Ratio -					
Video Day Wt -					
Carcass EPDs					
EPD		ACC			
Marb:	I +0.22	0.05			
REA:	I +0.25	0.05			
FAT:	I +0.028	0.05			

BW EPD	WW EPD	MILK EPD	YW EPD	Actual BW	205 Day Weight	205 Day Ratio	365 Day Weight	365 Day Ratio	Actual Scrotal
I -0.3	I +42	I +25	I +63	76	668	104	874	97	

Dam Production: 3 WR 106, 1 YR 97

Lot 7021 **AAR SURE SHOT 7021**
 Reg. No. 18883784 Tattoo: 7021-17 DOB:03/03/17
 Mytty In Focus
 Mogck Sure Shot
 Mogck Black Lass 2065

AAR Sure Shot 3012
 B/R New Design 036
 Barbaramere 080 A A R
 Barbaramere 773 A A R
 Sitz Traveler 8180

S A V Final Answer 0035
 S A V Emulous 8145

Final Lass 897 A A R
 Krugerrand of Donamere 490
 Krugerrand Lass 279 A A R
 A A R Cap Lass 163

Ultrasound					
Ribeye Ratio -					
% IMF Ratio -					
Video Day Wt -					
Carcass EPDs					
EPD		ACC			
Marb:	I +0.28	0.05			
REA:	I +0.40	0.05			
FAT:	I +0.012	0.05			

BW EPD	WW EPD	MILK EPD	YW EPD	Actual BW	205 Day Weight	205 Day Ratio	365 Day Weight	365 Day Ratio	Actual Scrotal
I +2.2	I +53	I +24	I +85	92	654	102	907	101	

Dam Production: 9 WR 97, 7 YR 99

Lot 7025 **AAR PERFORMER 7025**
 Reg. No. 18883787 Tattoo: 7025-17 DOB:03/07/17
 Schafer 21st Century
 Schafer 21C of 514 1005
 Chase 878 Lady Bando 07-514

McD Performer 472
 B C Mid Emblazon 854E 702
 Mid Eldorene 6511
 Mid Eldorene 384
 A A R Really Windy 1205

V D A R Really Windy 4097
 VDAR Blackbird 2031

Barbara Perfection 385 AAR
 Mid Performer 608
 Barbara Perfection 1071 Aar
 Barbara Perfection 953 A A R

Ultrasound					
Ribeye Ratio -					
% IMF Ratio -					
Video Day Wt -					
Carcass EPDs					
EPD		ACC			
Marb:	I +0.17	0.05			
REA:	I +0.16	0.05			
FAT:	I +0.013	0.05			

BW EPD	WW EPD	MILK EPD	YW EPD	Actual BW	205 Day Weight	205 Day Ratio	365 Day Weight	365 Day Ratio	Actual Scrotal
I +0.1	I +42	I +24	I +80	78	590	92			

Dam Production: 4 WR 102, 1 YR 108

Lot	AAR SURE SHOT 7033				Reg. No. 18883789		Tattoo: 7033-17		DOB:03/24/17																											
7033	Mytty In Focus																																			
Mogck Sure Shot																																				
Mogck Black Lass 2065																																				
AAR Sure Shot 3012																																				
B/R New Design 036																																				
Barbaramere 080 A A R																																				
Barbaramere 773 A A R																																				
Schurrtop American 5846																																				
Mid Performer 608																																				
Belles Shoshoness 155																																				
608 Rose 171 A A R																																				
V D A R Traveler 455																																				
Traveler Rose 064 A A R																																				
A A R Ambush Rose 064																																				
<table border="1"> <thead> <tr> <th colspan="3">Ultrasound</th> </tr> <tr> <td>Ribeye Ratio -</td> <td colspan="2"></td> </tr> <tr> <td>% IMF Ratio -</td> <td colspan="2"></td> </tr> <tr> <td>Video Day Wt -</td> <td colspan="2"></td> </tr> <tr> <th colspan="3">Carcass EPDs</th> </tr> <tr> <td>EPD</td> <td>ACC</td> <td></td> </tr> <tr> <td>Marb: I + 0.36</td> <td>0.05</td> <td></td> </tr> <tr> <td>REA: I + 0.33</td> <td>0.05</td> <td></td> </tr> <tr> <td>FAT: I + 0.014</td> <td>0.05</td> <td></td> </tr> </thead> </table>										Ultrasound			Ribeye Ratio -			% IMF Ratio -			Video Day Wt -			Carcass EPDs			EPD	ACC		Marb: I + 0.36	0.05		REA: I + 0.33	0.05		FAT: I + 0.014	0.05	
Ultrasound																																				
Ribeye Ratio -																																				
% IMF Ratio -																																				
Video Day Wt -																																				
Carcass EPDs																																				
EPD	ACC																																			
Marb: I + 0.36	0.05																																			
REA: I + 0.33	0.05																																			
FAT: I + 0.014	0.05																																			
BW	WW	MILK	YW	Actual	205 Day	205 Day	365 Day	365 Day	Actual																											
EPD	EPD	EPD	EPD	BW	Weight	Ratio	Weight	Ratio	Scrotal																											
I + 4.9	I + 48	I + 27	I + 76	106	670	104	979	109																												

Dam Production: 5 WR 100, 3 YR 108

Lot	AAR PERFORMER 7035				Reg. No. 18883791		Tattoo: 7035-17		DOB:03/27/17																											
7035	Schafer 21st Century																																			
Schafer 21C of 514 1005																																				
Chase 878 Lady Bando 07-514																																				
McD Performer 472																																				
B C Mid Emblazon 854E 702																																				
Mid Eldorene 6511																																				
Mid Eldorene 384																																				
O C C Emblazon 854E																																				
B C Mid Emblazon 854E 702																																				
Gibbet Hill Mignonne E37																																				
Barbaramere 056 A A R																																				
H A Image Maker 0415																																				
Barbaramere 856 A A R																																				
Barbaramere 084 A A R																																				
<table border="1"> <thead> <tr> <th colspan="3">Ultrasound</th> </tr> <tr> <td>Ribeye Ratio -</td> <td colspan="2"></td> </tr> <tr> <td>% IMF Ratio -</td> <td colspan="2"></td> </tr> <tr> <td>Video Day Wt -</td> <td colspan="2"></td> </tr> <tr> <th colspan="3">Carcass EPDs</th> </tr> <tr> <td>EPD</td> <td>ACC</td> <td></td> </tr> <tr> <td>Marb: I + 0.14</td> <td>0.05</td> <td></td> </tr> <tr> <td>REA: I + 0.21</td> <td>0.05</td> <td></td> </tr> <tr> <td>FAT: I + 0.015</td> <td>0.05</td> <td></td> </tr> </thead> </table>										Ultrasound			Ribeye Ratio -			% IMF Ratio -			Video Day Wt -			Carcass EPDs			EPD	ACC		Marb: I + 0.14	0.05		REA: I + 0.21	0.05		FAT: I + 0.015	0.05	
Ultrasound																																				
Ribeye Ratio -																																				
% IMF Ratio -																																				
Video Day Wt -																																				
Carcass EPDs																																				
EPD	ACC																																			
Marb: I + 0.14	0.05																																			
REA: I + 0.21	0.05																																			
FAT: I + 0.015	0.05																																			
BW	WW	MILK	YW	Actual	205 Day	205 Day	365 Day	365 Day	Actual																											
EPD	EPD	EPD	EPD	BW	Weight	Ratio	Weight	Ratio	Scrotal																											
I + 1.8	I + 43	I + 26	I + 76	94	598	99	859	96																												

Dam Production: 6 WR 105, 6 YR 104

Lot	AAR RENEGADE 7034				Reg. No. 18883790		Tattoo: 7034-17		DOB:03/25/17																											
7034	R R Rito 707																																			
Rito 707 of Ideal 3407 7075																																				
Ideal 3407 of 1418 076																																				
FAIRVIEW RENEGADE 4166																																				
Leachman Right Time																																				
FairView Lady Traveler X85																																				
B C C Lady Traveler 13B 93																																				
Schurrtop American 5846																																				
Mid Performer 608																																				
Belles Shoshoness 155																																				
Performer Rose 2099 AAR																																				
Sitz New Design 349M																																				
Designer Rose 785 A A R																																				
A A R Traveler Rose 362																																				
<table border="1"> <thead> <tr> <th colspan="3">Ultrasound</th> </tr> <tr> <td>Ribeye Ratio -</td> <td colspan="2"></td> </tr> <tr> <td>% IMF Ratio -</td> <td colspan="2"></td> </tr> <tr> <td>Video Day Wt -</td> <td colspan="2"></td> </tr> <tr> <th colspan="3">Carcass EPDs</th> </tr> <tr> <td>EPD</td> <td>ACC</td> <td></td> </tr> <tr> <td>Marb: I + 0.11</td> <td>0.05</td> <td></td> </tr> <tr> <td>REA: I + 0.22</td> <td>0.05</td> <td></td> </tr> <tr> <td>FAT: I + 0.016</td> <td>0.05</td> <td></td> </tr> </thead> </table>										Ultrasound			Ribeye Ratio -			% IMF Ratio -			Video Day Wt -			Carcass EPDs			EPD	ACC		Marb: I + 0.11	0.05		REA: I + 0.22	0.05		FAT: I + 0.016	0.05	
Ultrasound																																				
Ribeye Ratio -																																				
% IMF Ratio -																																				
Video Day Wt -																																				
Carcass EPDs																																				
EPD	ACC																																			
Marb: I + 0.11	0.05																																			
REA: I + 0.22	0.05																																			
FAT: I + 0.016	0.05																																			
BW	WW	MILK	YW	Actual	205 Day	205 Day	365 Day	365 Day	Actual																											
EPD	EPD	EPD	EPD	BW	Weight	Ratio	Weight	Ratio	Scrotal																											
I + 5.6	I + 44	I + 26	I + 71	102	655	102	935	104																												

Dam Production: 4 WR 105, 3 YR 106

Lot	AAR Sure Shot 7036				Reg. No. 18883792		Tattoo: 7036-17		DOB:03/31/17																											
7036	Mytty In Focus																																			
Mogck Sure Shot																																				
Mogck Black Lass 2065																																				
AAR Sure Shot 3012																																				
B/R New Design 036																																				
Barbaramere 080 A A R																																				
Barbaramere 773 A A R																																				
Bon View Bando 598																																				
Connealy Freightliner																																				
Joana Erica of Conanga																																				
Freightliner Ida 8064																																				
V D A R Traveler 455																																				
Traveler Ida 666 A A R																																				
A A R Lady Rito 962																																				
<table border="1"> <thead> <tr> <th colspan="3">Ultrasound</th> </tr> <tr> <td>Ribeye Ratio -</td> <td colspan="2"></td> </tr> <tr> <td>% IMF Ratio -</td> <td colspan="2"></td> </tr> <tr> <td>Video Day Wt -</td> <td colspan="2"></td> </tr> <tr> <th colspan="3">Carcass EPDs</th> </tr> <tr> <td>EPD</td> <td>ACC</td> <td></td> </tr> <tr> <td>Marb: I + 0.27</td> <td>0.05</td> <td></td> </tr> <tr> <td>REA: I + 0.28</td> <td>0.05</td> <td></td> </tr> <tr> <td>FAT: I + 0.030</td> <td>0.05</td> <td></td> </tr> </thead> </table>										Ultrasound			Ribeye Ratio -			% IMF Ratio -			Video Day Wt -			Carcass EPDs			EPD	ACC		Marb: I + 0.27	0.05		REA: I + 0.28	0.05		FAT: I + 0.030	0.05	
Ultrasound																																				
Ribeye Ratio -																																				
% IMF Ratio -																																				
Video Day Wt -																																				
Carcass EPDs																																				
EPD	ACC																																			
Marb: I + 0.27	0.05																																			
REA: I + 0.28	0.05																																			
FAT: I + 0.030	0.05																																			
BW	WW	MILK	YW	Actual	205 Day	205 Day	365 Day	365 Day	Actual																											
EPD	EPD	EPD	EPD	BW	Weight	Ratio	Weight	Ratio	Scrotal																											
I + 3.1	I + 45	I + 25	I + 71	98	650	101	872	97																												

Dam Production: 9 WR 100, 7 YR 96

Yearling Bulls

Lot	AAR Renegade 807				Reg. No. 19232034		Tattoo: 807-18		DOB:01/24/18																											
807	R R Rito 707																																			
Rito 707 of Ideal 3407 7075																																				
Ideal 3407 of 1418 076																																				
FAIRVIEW RENEGADE 4166																																				
Leachman Right Time																																				
FairView Lady Traveler X85																																				
B C C Lady Traveler 13B 93																																				
Koupal Juneau 797																																				
Koupal Advance 28																																				
Koupal Ebonette 734																																				
BARBARAMERE 569 AAR																																				
H A Image Maker 0415																																				
Barbaramere 894 A A R																																				
Barbaramere 460 A A R																																				
<table border="1"> <thead> <tr> <th colspan="3">Ultrasound</th> </tr> <tr> <td>Ribeye Ratio -</td> <td colspan="2"></td> </tr> <tr> <td>% IMF Ratio -</td> <td colspan="2"></td> </tr> <tr> <td>Video Day Wt -</td> <td colspan="2"></td> </tr> <tr> <th colspan="3">Carcass EPDs</th> </tr> <tr> <td>EPD</td> <td>ACC</td> <td></td> </tr> <tr> <td>Marb: I + 0.20</td> <td>0.05</td> <td></td> </tr> <tr> <td>REA: I + 0.31</td> <td>0.05</td> <td></td> </tr> <tr> <td>FAT: I + 0.021</td> <td>0.05</td> <td></td> </tr> </thead> </table>										Ultrasound			Ribeye Ratio -			% IMF Ratio -			Video Day Wt -			Carcass EPDs			EPD	ACC		Marb: I + 0.20	0.05		REA: I + 0.31	0.05		FAT: I + 0.021	0.05	
Ultrasound																																				
Ribeye Ratio -																																				
% IMF Ratio -																																				
Video Day Wt -																																				
Carcass EPDs																																				
EPD	ACC																																			
Marb: I + 0.20	0.05																																			
REA: I + 0.31	0.05																																			
FAT: I + 0.021	0.05																																			
BW	WW	MILK	YW	Actual	205 Day	205 Day	365 Day	365 Day	Actual																											
EPD	EPD	EPD	EPD	BW	Weight	Ratio	Weight	Ratio	Scrotal																											
-3.4	+42	+26	+69	64	547	98																														

Dam Production: 2 WR 97, 1 YR 92

Lot	AAR Fortunate 816				Reg. No. 19239921		Tattoo: 816-18		DOB:01/28/18																											
816	Sinclair Fortunate Son																																			
Sinclair Emulate 7XT28																																				
Sinclair Blackbird 2P8 7079																																				
MCD Fortunate 506																																				
Cole Creek Black Cedar 46P																																				
Performiss 029																																				
Glory 1148 Trendess 877																																				
Bon View New Design 1407																																				
Sitz New Design 349M																																				
Sitz Pride 166K																																				
Ida Design 757 A A R																																				
Leachman Right Time																																				
Right Time Ida 275 A A R																																				
Cash Flow Ida 853 A A R																																				
<table border="1"> <thead> <tr> <th colspan="3">Ultrasound</th> </tr> <tr> <td>Ribeye Ratio -</td> <td colspan="2"></td> </tr> <tr> <td>% IMF Ratio -</td> <td colspan="2"></td> </tr> <tr> <td>Video Day Wt -</td> <td colspan="2"></td> </tr> <tr> <th colspan="3">Carcass EPDs</th> </tr> <tr> <td>EPD</td> <td>ACC</td> <td></td> </tr> <tr> <td>Marb: I + 0.52</td> <td>0.05</td> <td></td> </tr> <tr> <td>REA: I + 0.24</td> <td>0.05</td> <td></td> </tr> <tr> <td>FAT: I + 0.023</td> <td>0.05</td> <td></td> </tr> </thead> </table>										Ultrasound			Ribeye Ratio -			% IMF Ratio -			Video Day Wt -			Carcass EPDs			EPD	ACC		Marb: I + 0.52	0.05		REA: I + 0.24	0.05		FAT: I + 0.023	0.05	
Ultrasound																																				
Ribeye Ratio -																																				
% IMF Ratio -																																				
Video Day Wt -																																				
Carcass EPDs																																				
EPD	ACC																																			
Marb: I + 0.52	0.05																																			
REA: I + 0.24	0.05																																			
FAT: I + 0.023	0.05																																			
BW	WW	MILK	YW	Actual	205 Day	205 Day	365 Day	365 Day	Actual																											
EPD	EPD	EPD	EPD	BW	Weight	Ratio	Weight	Ratio	Scrotal																											
-3.4	+39	+25	+67	66	589	97																														

Dam Production: 10 WR 99, 6 YR 97

Lot	AAR Fortunate 815				Reg. No. 19239920		Tattoo: 815-18		DOB:01/28/18																											
815	Sinclair Fortunate Son																																			
Sinclair Emulate 7XT28																																				
Sinclair Blackbird 2P8 7079																																				
MCD Fortunate 506																																				
Cole Creek Black Cedar 46P																																				
Performiss 029																																				
Glory 1148 Trendess 877																																				
Q A S Traveler 23-4																																				
V D A R Traveler 455																																				
V D A R Kathy 16																																				
Evergreen Traveler 874 A A R																																				
A A R Extra 814																																				
Lady Extra 670 A A R																																				
Evergreen 391 A A R																																				
<table border="1"> <thead> <tr> <th colspan="3">Ultrasound</th> </tr> <tr> <td>Ribeye Ratio -</td> <td colspan="2"></td> </tr> <tr> <td>% IMF Ratio -</td> <td colspan="2"></td> </tr> <tr> <td>Video Day Wt -</td> <td colspan="2"></td> </tr> <tr> <th colspan="3">Carcass EPDs</th> </tr> <tr> <td>EPD</td> <td>ACC</td> <td></td> </tr> <tr> <td>Marb: I + 0.40</td> <td>0.05</td> <td></td> </tr> <tr> <td>REA: I + 0.16</td> <td>0.05</td> <td></td> </tr> <tr> <td>FAT: I + 0.032</td> <td>0.05</td> <td></td> </tr> </thead> </table>										Ultrasound			Ribeye Ratio -			% IMF Ratio -			Video Day Wt -			Carcass EPDs			EPD	ACC		Marb: I + 0.40	0.05		REA: I + 0.16	0.05		FAT: I + 0.032	0.05	
Ultrasound																																				
Ribeye Ratio -																																				
% IMF Ratio -																																				
Video Day Wt -																																				
Carcass EPDs																																				
EPD	ACC																																			
Marb: I + 0.40	0.05																																			
REA: I + 0.16	0.05																																			
FAT: I + 0.032	0.05																																			
BW	WW	MILK	YW	Actual	205 Day	205 Day	365 Day	365 Day	Actual																											
EPD	EPD	EPD	EPD	BW	Weight	Ratio	Weight	Ratio	Scrotal																											
-1.4	+43	+23	+72	68	620	102																														

Dam Production: 9 WR 97, 5 YR 105

Lot	AAR Juneau 821				Reg. No. 19232041		Tattoo: 821-18		DOB:01/29/18																											
821	O C C Emblazon 854E																																			
O C C Juneau 807J																																				
O C C Dixie Erica 903E																																				
McD AAR Juneau 944																																				
C A Future Direction 5321																																				
Mid Ambushess 354																																				
Trans Ambushess 147																																				
Connealy Thunder																																				
Sitz Thunderbolt 0189																																				
Sitz Elsiemere 1779																																				
Thunderbolt Pride 6073 AAR																																				
H A Image Maker 0415																																				
Pride Maker 0150 A A R																																				
Blackcap Pride 791																																				
<table border="1"> <thead> <tr> <th colspan="3">Ultrasound</th> </tr> <tr> <td>Ribeye Ratio -</td> <td colspan="2"></td> </tr> <tr> <td>% IMF Ratio -</td> <td colspan="2"></td> </tr> <tr> <td>Video Day Wt -</td> <td colspan="2"></td> </tr> <tr> <th colspan="3">Carcass EPDs</th> </tr> <tr> <td>EPD</td> <td>ACC</td> <td></td> </tr> <tr> <td>Marb:</td> <td></td> <td></td> </tr> <tr> <td>REA:</td> <td></td> <td></td> </tr> <tr> <td>FAT:</td> <td></td> <td></td> </tr> </thead> </table>										Ultrasound			Ribeye Ratio -			% IMF Ratio -			Video Day Wt -			Carcass EPDs			EPD	ACC		Marb:			REA:			FAT:		
Ultrasound																																				
Ribeye Ratio -																																				
% IMF Ratio -																																				
Video Day Wt -																																				
Carcass EPDs																																				
EPD	ACC																																			
Marb:																																				
REA:																																				
FAT:																																				
BW	WW	MILK	YW	Actual	205 Day	205 Day	365 Day	365 Day	Actual																											
EPD	EPD	EPD	EPD	BW	Weight	Ratio	Weight	Ratio	Scrotal																											
-1.1	+42	+27	+71	73	580	95																														

Lot 822	AAR Juneau 822		Reg. No. 19232042	Tattoo: 822-18	DOB:01/29/18				
O C C Juneau 807J	O C C Emblazon 854E	Ultrasound							
MCD AAR Juneau 944	O C C Dixie Erica 903E	Ribeye Ratio -							
Mid Ambushess 354	C A Future Direction 5321	% IMF Ratio -							
G A R Retail Product	Trans Ambushess 147	Video Day Wt -							
Retail Lass 6074 AAR	G A R Precision 1680	Carcass EPDs	EPD	ACC					
Final Answer Lass 8058	G A R Ext 4927	Marb:							
	S A V Final Answer 0035	REA:							
	A A R	FAT:							
	Right Time Lass 256 A A R								
BW	WW	MILK	YW	Actual	205 Day	205 Day	365 Day	365 Day	Actual
EPD	EPD	EPD	EPD	BW	Weight	Ratio	Weight	Ratio	Scrotal
-1.1	+42	+28	+70	63	609	100			

Lot 846	AAR Fortunate 846		Reg. No. 19239928	Tattoo: 846-18	DOB:02/07/18				
Sinclair Fortunate Son	Sinclair Emulate 7XT28	Ultrasound							
MCD Fortunate 506	Sinclair Blackbird 2P8 7079	Ribeye Ratio -							
Performiss 029	Cole Creek Black Cedar 46P	% IMF Ratio -							
MCD AAR Juneau 944	Glory 1148 Trendess 877	Video Day Wt -							
Juneau Pride 459 AAR	O C C Juneau 807J	Carcass EPDs	EPD	ACC					
Final Pride 2069 AAR	Mid Ambushess 354	Marb: I + 0.50	0.05						
	S A V Final Answer 0035	REA: I + 0.35	0.05						
	Ox Bow Pride 0129	FAT: I + 0.046	0.05						
BW	WW	MILK	YW	Actual	205 Day	205 Day	365 Day	365 Day	Actual
EPD	EPD	EPD	EPD	BW	Weight	Ratio	Weight	Ratio	Scrotal
-1.0	+50	+25	+83	72	563	101			

Dam Production: 3 WR 101, 2 YR 102

Lot 823	AAR Juneau 823		Reg. No. 19232043	Tattoo: 823-18	DOB:01/29/18				
O C C Juneau 807J	O C C Emblazon 854E	Ultrasound							
MCD AAR Juneau 944	O C C Dixie Erica 903E	Ribeye Ratio -							
Mid Ambushess 354	C A Future Direction 5321	% IMF Ratio -							
AAR Convertabull 401	Trans Ambushess 147	Video Day Wt -							
Barbaramere 6091 AAR	Willekes Converter 4402-9	Carcass EPDs	EPD	ACC					
Barbaramere 263 A A R	Barbara Perfection 2058 AAR	Marb:							
	Leachman Right Time	REA:							
	Barbaramere 080 A A R	FAT:							
BW	WW	MILK	YW	Actual	205 Day	205 Day	365 Day	365 Day	Actual
EPD	EPD	EPD	EPD	BW	Weight	Ratio	Weight	Ratio	Scrotal
-0.7	+43	+28	+71	66	631	103			

Lot 8016	AAR Renegade 8016		Reg. No. 19232021	Tattoo: 8016-16	DOB:02/18/18				
R R Rito 707	R R Rito 707	Ultrasound							
FAIRVIEW RENEGADE 4166	Rito 707 of Ideal 3407 7075	Ribeye Ratio -							
FairView Lady Traveler X85	Ideal 3407 of 1418 076	% IMF Ratio -							
OFF Pounder U831	Leachman Right Time	Video Day Wt -							
Pounder Evergreen 182 A A R	B C C Lady Traveler 13B 93	Carcass EPDs	EPD	ACC					
Evergreen 990 A A R	Schurrtop E267 X687	Marb: I + 0.17	0.05						
	Basin Zara 831D	REA: I + 0.22	0.05						
	GDAR Game Day 449	FAT: I + 0.024	0.05						
	Lady Extra 670 A A R								
BW	WW	MILK	YW	Actual	205 Day	205 Day	365 Day	365 Day	Actual
EPD	EPD	EPD	EPD	BW	Weight	Ratio	Weight	Ratio	Scrotal
-3.0	+42	+25	+70	62	572	103			

Dam Production: 6 WR 106, 3 YR 110

Lot 824	AAR Renegade 824		Reg. No. 19232044	Tattoo: 824-18	DOB:01/30/18				
R R Rito 707	R R Rito 707	Ultrasound							
FAIRVIEW RENEGADE 4166	Rito 707 of Ideal 3407 7075	Ribeye Ratio -							
FairView Lady Traveler X85	Ideal 3407 of 1418 076	% IMF Ratio -							
A A R Missing Link 038	Leachman Right Time	Video Day Wt -							
Missing Ida 3167 AAR	B C C Lady Traveler 13B 93	Carcass EPDs	EPD	ACC					
Freightliner Ida 8064	O C C Missing Link 830M	Marb: I + 0.08	0.05						
	Barbaramere 476 A A R	REA: I + 0.17	0.05						
	Connealy Freightliner	FAT: I + 0.036	0.05						
	Traveler Ida 666 A A R								
BW	WW	MILK	YW	Actual	205 Day	205 Day	365 Day	365 Day	Actual
EPD	EPD	EPD	EPD	BW	Weight	Ratio	Weight	Ratio	Scrotal
-2.3	+39	+23	+59	74	569	102			

Dam Production: 4 WR 99, 2 YR 89

Lot 8026	AAR Convertabull 8026		Reg. No. 19232026	Tattoo: 8026-18	DOB:03/04/18				
Rito 112 of 2536 Rito 616	Rito 112 of 2536 Rito 616	Ultrasound							
AAR Convertabull 401	Willekes Converter 4402-9	Ribeye Ratio -							
Barbara Perfection 2058 AAR	Willekes Lady of 410	% IMF Ratio -							
Paramont Ambush 2172	Cole Creek Black Cedar 46P	Video Day Wt -							
Ambush Teresa 0174 A A R	Barbara Perfection 158 A A R	Carcass EPDs	EPD	ACC					
Teresa 573 A A R	Bandolier Eston Durness 42B	Marb: I + 0.35	0.05						
	E W S Miss Burgess 1720	REA: I + 0.28	0.05						
	G A R Retail Product	FAT: I - 0.006	0.05						
	Div Teresa 877 A A R								
BW	WW	MILK	YW	Actual	205 Day	205 Day	365 Day	365 Day	Actual
EPD	EPD	EPD	EPD	BW	Weight	Ratio	Weight	Ratio	Scrotal
-1.7	+36	+23	+56	69	515	92			

Dam Production: 7 WR 98, 4 YR 99

Lot 842	AAR Fortunate 842		Reg. No. 19239924	Tattoo: 842-18	DOB:02/03/18				
Sinclair Fortunate Son	Sinclair Emulate 7XT28	Ultrasound							
MCD Fortunate 506	Sinclair Blackbird 2P8 7079	Ribeye Ratio -							
Performiss 029	Cole Creek Black Cedar 46P	% IMF Ratio -							
A A R Bushwacker 417	Glory 1148 Trendess 877	Video Day Wt -							
Blackcap 699 A A R	B C C Bushwacker 41-93	Carcass EPDs	EPD	ACC					
Rito Blackcap 479 A A R	Barbaramere 084 A A R	Marb: I + 0.47	0.05						
	Rito 616 of 4B20 6807	REA: I + 0.29	0.05						
	Blackcap 269 A A R	FAT: I + 0.021	0.05						
BW	WW	MILK	YW	Actual	205 Day	205 Day	365 Day	365 Day	Actual
EPD	EPD	EPD	EPD	BW	Weight	Ratio	Weight	Ratio	Scrotal
-0.5	+47	+23	+79	74	627	103			

Dam Production: 11 WR 100, 9 YR 102





Commercial Bred Heifers

Group 1: Lots 1-8 Bred to 944 or Renegade. Ultrasounded to have heifer calves 1/25-2/5

Group 2: Lots 9-12 Bred to 944 or Renegade. Ultrasounded to have bull calves 1/25-1/28

Group 3: Lots 13-26 Bred to 603. Ultrasounded to have heifer calves 2/16-3/10

Group 4: Lots 27-38 Bred to 603. Ultrasounded to have bull calves 2/17-3/8

Group 5: Lots 39-51 Bred to 603. No sex on calves 3/16-4/5

MCD AAR Juneau 944

Bw WW YW Milk Marb RE
-.5 +41 +67 +32 +.58 +.55

AAR Absolute 603

Bw WW YW Milk Marb RE
0 +62 +106 +21 +.59 +.52

Fairview Renegade 4166

Bw WW YW Milk Marb RE
-2.2 +38 +60 +22 -.16 +.18

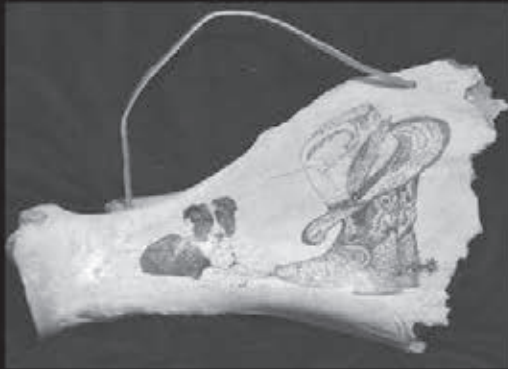


K'S DOTS

Ink art



This artwork is created by me, Kyra Armstrong, a cowgirl that was born and raised on a working Ranch in Western Montana. I love my cows and riding up in the mountains. I also enjoy helping in any way that I can, but I'm not much of a mechanic.



I like taking pictures of my life on the ranch and then turning them into art. My art is all done with a fine point sharpie marker. By using little dots I create a picture on bones that I dug out of the back pasture. After I'm done with my bones, I spray them with a Mod



Podge finish to help protect them and then add a leather strap to use for hanging the bones up. They are now ready for you to decorate your house or cabin, or maybe as a gift for someone else!



Kyra Armstrong
929 Hwy 359
Cardwell, MT 59721

(406)-565-2750

kyraarmstrong335@gmail.com

You can also find Kyra's art at Gallery 287 in Ennis Mt!



Color~Class~Cow

Mahlstedt Ranch

Quarter Horses

www.mahlstedtranch.com



canen@midrivers.com

(406) 939-1890



Weanlings, yearlings,
& young prospects available
at the ranch private treaty.

Circle, MT



Foals by
EZ Nick Bar



Foals by
MRI Snips Spirit

Foals by Sanrose Blue Colonel





- **Factory Direct Pricing for Loose Mineral, Protein Blocks, and Custom Liquids Delivered to the Ranch**

- **Home of  Minerals containing**
 - **Zinpro chelated minerals**
 - **Intellibond Copper Chloride**
 - **Redmond Natural Salt**
 - **Selenium Yeast**

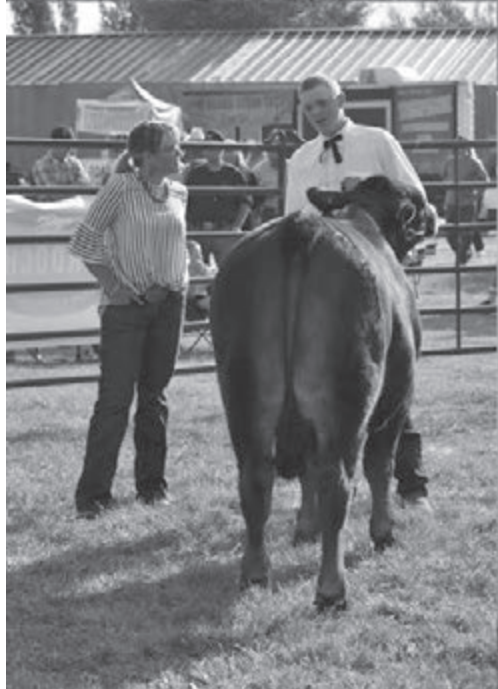
- **Wholesale Warehouse in Whitehall, MT**

- **End of Year Sale Dec 1 –28**

Contact

Billy Whitehurst

406.490.3910





Armstrong Angus Ranch

Chad Armstrong
55 Cemetery Hill Rd
Cardwell, MT 59721

FIRST CLASS

US Postage
Paid
Ballyhoo Printing
Permit 6 • Hobson, MT



Date: December 12, 2018

Lunch: 12:00pm

Sale: 1:00pm

Location: At Ranch South of Cardwell, MT

You, O Lord, keep my lamp burning; my God turns my darkness into light. With your help I can advance against a troop; with my God I can scale a wall. Psalm 18:28-29