

*Armstrong*

*Breeding for  
Profitability*

*Angus Ranch*

*Wednesday, December 11, 2019  
1pm at ranch near Cardwell*



*Wednesday, December 11, 2019*

*Sale 1pm Lunch 12pm*

**Auctioneer**

Dave Ashcraft  
406-596-3474

**Ring Men**

John Goggins

Cell: 406-698-4159 Office: 406-259-4589

Email: wlrjohn@men.net

Billy Whitehurst

Cell: 406-490-3910

Scott Robbie

Cell: 406-855-0534

Karoline Rose

Cell: 406-577-6310

**Absentee Bidding:**

If you can't make the sale, please feel free to call Chad (406-224-0586) or one of the ring men.

**Sale Order**

The bulls will sell in catalog order with the 10 bulls that we used being sold first and the rest following in birth order.

**Bull Videos**

Individual videos may be viewed at [www.ArmstrongAngusRanch.com](http://www.ArmstrongAngusRanch.com)

**Sale Location**

Exit off of interstate 90 at the Cardwell, MT exit. Take highway 359 toward Harrison, MT 4 - 4 1/2 miles to Cemetery Hill Rd ( There is an Armstrong Angus sign along the road) turn right and travel up the gravel road 1/2 mile and turn left, just before the first house on the left. Go 1/4 mile to Chad and Trista's house and the sale is there. Look for signs.

**Herd Health:**

The bulls are fertility tested by Dr. Cory Tebay (406-287-3333) Western Veterinary, Whitehall, MT and we guarantee them as sound breeders. The bulls are poured with Vetrimec when we semen test. All females selling have been ultrasounded in late July by Dr. Liem Robbins, Falon County Vet, Baker, MT and pregnancy tested by Dr. Cory Tebay the day before the sale. They have been poured with Vetrimec and given the first shot of ScourGuard 4KC.

**Delivery**

Bull delivery is free up to 300 miles if there are 3 or more bulls going that direction. Heifer delivery is at your cost.

**Catalog Design:**







**Klancy, Kyra, Kaden, Trista, and Chad Armstrong**

## *Contact us:*

Chad Cell: 406-224-0586

Home: 406-287-3212

Trista Cell: 406-565-2718

Kyra Cell: 406-565-2750

Klancy Cell: 406-565-0654

[www.ArmstrongAngusRanch.com](http://www.ArmstrongAngusRanch.com)



*find us on*

*Facebook at:*

**Armstrong Angus Ranch**

Hello again,

Thank you for taking the time to look through our catalog. I think all of us will remember this year and the struggles and blessings it has given us. For us, we can say that the year has thinned the cow herd of some marginal cows. This year has reinforced our desire to measure and breed more for the financial profit and less on epd's.

Our goal is to produce cattle that will maximize profits and not just maximize pounds regardless of the profit. Extra pounds of calf weight will not compensate for open cows or the extra feed costs in order to gain those extra pounds. Cows need to live on grass and hay and not on grain in order to be profitable. We feel that checking input costs is what will keep cattle producers in business and choose that over having the heaviest weaning calves around. We are trying to focus more on cows that need less input in both labor and feed supplements in order to hopefully make them more profitable for you, our customers.

We have found that by relying hard on AI in order to maximize our genetic progress, we have not been able to breed as consistently toward our goal of profitability as we would like. This year we used 10 bull calves that we raised to breed about 140 registered cows for about 4 weeks in hopes of moving our genetics in a more fertile, profitable direction. We will identify the calves' sires by DNA test and will be able to see which bulls produced the most calves (highest libido). Hopefully by continuing to do this we can breed our cattle to become more fertile (less open cows because bulls breed more effectively therefore you can breed your cows with fewer bulls). We are keeping 1/3 interest in all the bulls this year so we can draw semen on any of these bulls that performed well for you or when we used them. Our interest is only in semen; the bull and his salvage value are completely yours. We are reserving the right to collect from the bull at your convenience and our expense if we so desire. We AI'd all of the heifers and about 80 cows mainly to outside bulls to compare with our program. We feel that there is no shortage of growth in Angus cattle at this point and are mostly trying to find the fertile, sound cattle that are available.

We have incorporated our scoring system into the catalog this year and added a calf vigor score which will start with the 2019 born calves. The herd sires will also have the same scoring system based on what we have seen in their progeny. If we have not had experience with them in any trait, we will not give them a score for that trait. We hope this approach will eventually give you a more consistent and profitable product. We would like to know your thoughts on this system and this approach.

We pray you all have a safe and blessed year and hope to see you all soon. If you can't make it sale day, just call us, one of the ringmen, or Dave Ashcraft and we will help you anyway we can.

- The Armstrong family

# Armstrong Score Sheet Explanation

## **Feet** - Foot soundness and body structure.

1. Very poor
  2. Poor
  3. Average/ Ok
  4. Good
  5. Excellent
- tends toward post leg  
+ tends toward sickle leg  
*No mark means that it has good structure*

## **Muscling**

1. Little muscling
2. Some muscling
3. Average muscling
4. Clear muscle definition
5. Heavily muscling

## **Disposition**

1. Wild - aggressive
2. Nervous ( excitable when alone)
3. Average ( normally handles fine)
4. Laid back but responds to pressure
5. Extremely tame may be hard to move

## **Fertility** - Bulls ability to breed and cows ability to conceive

1. Many cows open / poor libido
2. Some cows open / some libido evident
3. Average conception
4. Higher conception / good libido
5. Most cows pregnant

## **Mothering** - Daughters projected desire to mother

1. Doesn't mother
2. Mothers calf but is pretty laid back
3. Good mother
4. Good mother but may be more aggressive
5. Aggressive mother but may over-mother

## **W. Weight** - Projected weaning advantage

1. Lightest weight
2. Below average weight
3. Average weight
4. Above average weight
5. Highest performance

## **Frame** - Estimated frame size

1. Small ( frame size of about 4)
2. Frame size of about 5
3. Average (Frame size of about 5.5)
4. Frame size of about 6
5. Large (frame size about 7)

## **Fleshing** - Animals ability to maintain flesh

1. Very hard keeping
2. Animal is thin but still functional
3. Average animal
4. Good flesh (very healthy looking)
5. Very good shape (tending toward obesity)

## **Calv. E.** - Calving Ease

1. Very large, use on cows only
2. Somewhat large, recommended for cows
3. Average, throws some larger calves
4. Somewhat small, recommended for heifers
5. Very easy calving (possible dinks)

## **D. Milk** - Estimated milk production of daughters

1. Poor milk production, calf shows signs of starvation
2. Low milk - calf may have poor health/performance
3. Average milk - calf is healthy and performs fine
4. Above average milk - calf should be bloomy and fat
5. High milk - cow may have fertility or udder problems

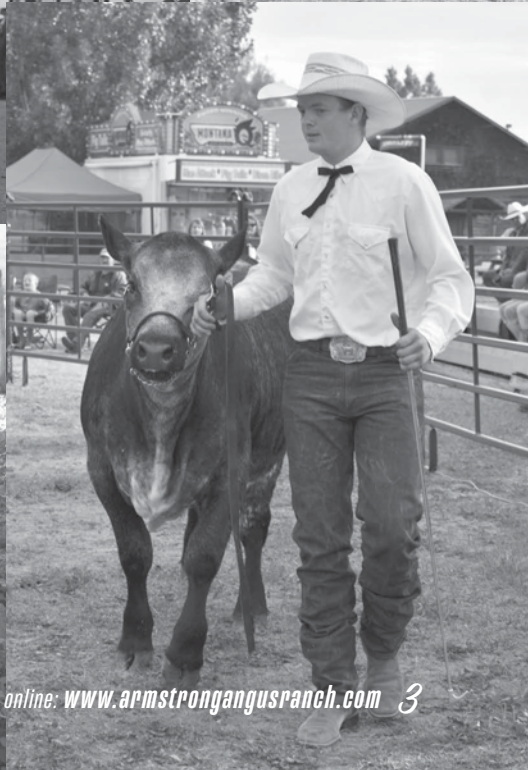
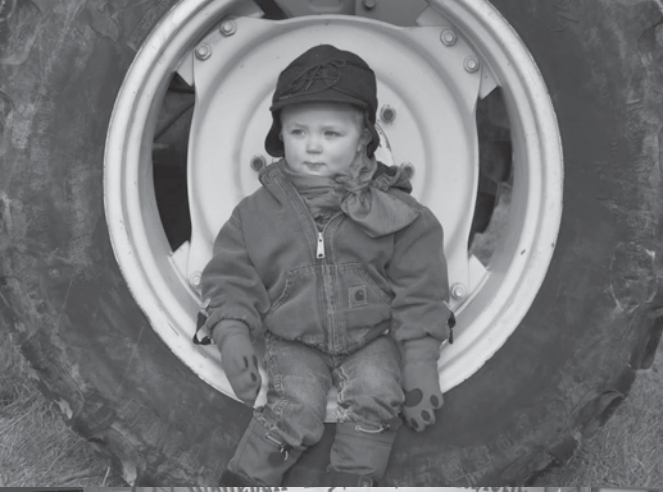
## **Udder** - daughters projected udder structure

1. Pendulous udder or big teats
2. Somewhat pendulous udder or larger teats
3. Average teat or udder structure
4. Tight udder or smaller than average teats
5. Small udder or small teats

## **Calf Vigor**

1. Calf won't suck (needs tubed)
2. Calf slow or had to help suck
3. Average calf got going without problems
4. Calf aggressive or energetic
5. Calf very energetic and quick to nurse







# AAR REFERENCE SIRES



AAR RANCH SCORES							
FOOT	5	CALV. E.	4				
DISPO.	3	CALF VIG.	3.6				
WN WT.	3	FERTILITY	4.5				
FRAME	3	D. MILK	4				
MUSLING	3.5	UDDER	2				
FLESHING	5	MOTHERING	3				
AAA EPD	BW EPD	WW EPD	YW EPD	MILK EPD	SCR EPD	MB EPD	REA EPD
	-0.7	+0.39	+0.64	+0.36	+1.11	+0.54	+0.53

## McD AAR Juneau 944

REG# 16455009    Tattoo: 944    DOB: 03/18/2009  
 O C C EMBLAZON 854E  
 O C C JUNEAU 807J  
 O C C DIXIE ERICA 903E  
 C A FUTURE DIRECTION 5321  
**MID AMBUSHESS 354**  
 TRANS AMBUSHESS 147



AAR RANCH SCORES							
FOOT	2.5	CALV. E.	3				
DISPO.	4.5	CALF VIG.	3.7				
WN WT.	4.5	FERTILITY	3.5				
FRAME	2.5	D. MILK	3				
MUSLING	4	UDDER	2				
FLESHING	4	MOTHERING	3				
AAA EPD	BW EPD	WW EPD	YW EPD	MILK EPD	SCR EPD	MB EPD	REA EPD
	+0.4	+0.70	+1.24	+0.21	+1.00	+0.40	+0.74

## AB-LVS Capitalist 4507

REG# 17762778    Tattoo: 4507    DOB: 01/11/2014  
 S A V FINAL ANSWER 0035  
**CONNELLY CAPITALIST 028**  
 PRIDES PITA OF CONANGA 8821  
 WMR TIMELESS 458  
**AB-LVS EMMA 096**  
 OX BOW EMMA E396

Footnote or Dam records if desired.



AAR RANCH SCORES							
FOOT	4	CALV. E.	2.5				
DISPO.	2.5	CALF VIG.	3.7				
WN WT.	4	FERTILITY	3.5				
FRAME	3.5	D. MILK	3				
MUSLING	3	UDDER	3				
FLESHING	3	MOTHERING	3				
AAA EPD	BW EPD	WW EPD	YW EPD	MILK EPD	SCR EPD	MB EPD	REA EPD
	+0.9	+0.56	+0.88	+0.22	+0.24	+0.39	+0.34

## AAR Convertabull 401

REG# 18028454    Tattoo: 401    DOB: 01/19/2014  
 RITO 112 OF 2536 RITO 616  
**WILLEKES CONVERTER 4402-9**  
 WILLEKES LADY OF 410  
 COLE CREEK BLACK CEDAR 46P  
**BARBARA PERFECTION 2058 AAR**  
 BARBARA PERFECTION 158 AAR



AAR RANCH SCORES							
FOOT	4	CALV. E.	2				
DISPO.	4	CALF VIG.					
WN WT.	4	FERTILITY					
FRAME	3.5	D. MILK	3				
MUSLING	4	UDDER	3				
FLESHING	4	MOTHERING	3				
AAA EPD	BW EPD	WW EPD	YW EPD	MILK EPD	SCR EPD	MB EPD	REA EPD
	+4.1	+0.70	+1.33	+0.19	+1.18	-0.06	+1.13

## SAV Resource 1441

REG# 17016597    Tattoo: 1441    DOB: 01/07/2011  
 R R RITO 707  
**RITO 707 OF IDEAL 3407 7075**  
 IDEAL 3407 OF 1418 076  
 SAV 8180 TRAVELER 004  
**SAV BLACKCAP MAY 4136**  
 SAV MAY 2397



## B3R Back To Basics U077

REG# 16317735	Tattoo: U077	DOB: 09/25/2008					
BR3 0004 ELECTRA 8082-8017							
<b>B3R TENDER TEN R065</b>							
B3R N127 5522 BLACKBIRD 203							
B3R P061 M048 CAFD M098							
<b>B3R S024 ELISE P061 N191</b>							
B3R N191 0128 ELISE 9032							
AAA EPD	BW EPD	WW EPD	YW EPD	MILK EPD	SCR EPD	MB EPD	REA EPD
	-4.0	+35	+59	+26	+93	+72	-11

AAR RANCH SCORES			
FOOT		CALV. E.	4
DISPO.	3.5	CALF VIG.	3.8
WN WT.	3.5	FERTILITY	
FRAME	3	D. MILK	
MUSCLING	3.5	UDDER	
FLESHING	3.5	MOTHERING	



OR Igen

## FairView Renegade 4166

REG# 18164849	Tattoo: 4166	DOB: 07/05/2014					
R R RITO 707							
<b>RITO 707 OF IDEAL 3407 7075</b>							
IDEAL 3407 OF 1418 076							
LEACHMAN RIGHT TIME							
<b>FAIRVIEW LADY TRAVELER X85</b>							
B C C LADY TRAVELER 13B 93							
AAA EPD	BW EPD	WW EPD	YW EPD	MILK EPD	SCR EPD	MB EPD	REA EPD
	-1.9	+39	+62	+23	+03	-.17	+25

AAR RANCH SCORES			
FOOT	3.5	CALV. E.	4
DISPO.	3	CALF VIG.	3.9
WN WT.	3	FERTILITY	3.5
FRAME	3	D. MILK	3
MUSCLING	3.5	UDDER	3
FLESHING	4	MOTHERING	3



## McD Fortunate 506

REG# 18387007	Tattoo: 506	DOB: 03/09/2015					
SINCLAIR EMULATE 7XT28							
<b>SINCLAIR FORTUNATE SON</b>							
SINCLAIR BLACKBIRD 2P8 7079							
COLE CREEK BLACK CEDAR 46P							
<b>PERFORMISS 029</b>							
GLORY 1148 TRENDESS 877							
AAA EPD	BW EPD	WW EPD	YW EPD	MILK EPD	SCR EPD	MB EPD	REA EPD
	-.6	+54	+94	+24	+57	+66	+36

AAR RANCH SCORES			
FOOT	3.5	CALV. E.	3.5
DISPO.	2	CALF VIG.	
WN WT.	4	FERTILITY	
FRAME	4	D. MILK	
MUSCLING	2.5	UDDER	
FLESHING	2.5	MOTHERING	



## AAR Absolute 603

REG# 18569756	Tattoo: 603	DOB: 01/15/2016					
S A V FINAL ANSWER 0035							
<b>K C F BENNETT ABSOLUTE</b>							
THOMAS MISS LUCY 5152							
APEX WINDY 078							
<b>WINDY ROSE 476 AAR</b>							
HOMER ROSE 0B3 A A R							
AAA EPD	BW EPD	WW EPD	YW EPD	MILK EPD	SCR EPD	MB EPD	REA EPD
	-2	+57	+101	+23	+77	+62	+53

AAR RANCH SCORES			
FOOT	4	CALV. E.	4
DISPO.	2	CALF VIG.	3.9
WN WT.	3	FERTILITY	3.5
FRAME	2.5	D. MILK	3
MUSCLING	3.5	UDDER	3
FLESHING	4	MOTHERING	4



603 is the sire to the majority of our bred heifer offering.

# 2-YEAR-OLD ANGUS BULLS

We reserve the right to retain 1/3 interest.



## 815 AAR Fortunate 815

BULL REG# 19239920 Tattoo: 815 DOB: 01/28/18

SINCLAIR FORTUNATE SON  
**MCD FORTUNATE 506**  
 PERFORMISS 029

SINCLAIR EMULATE 7XT28  
 SINCLAIR BLACKBIRD 2P8 7079  
 COLE CREEK BLACK CEDAR 46P  
 GLORY 1148 TRENDESS 877

V D A R TRAVELER 465  
**EVERGREEN TRAVELER 874 A A R**  
 LADY EXTRA 670 A A R

Q A S TRAVELER 23-4  
 V D A R KATHY 16  
 A A R EXTRA 814  
 EVERGREEN 391 A A R

AAR RANCH SCORES			
FOOT	3.5	CALV. E.	4
DISPO.	4	CALF VIG.	
WN WT.	4	FERTILITY	3.5
FRAME	3.5	D. MILK	4
MUSCLING	4	UDDER	3
FLESHING	4	MOTHERING	3

AAA EPD	BW EPD	WW EPD	YW EPD	MILK EPD	MB EPD	REA EPD	ACT. SCR
	-1.4	43	75	24	0.36	0.25	38
IND. PERFORM	REA RATIO	MB RATIO	BIRTH WT.	205 WT.	NR	365 WT.	YR. RATIO
	102	88	68	620	102	1025	104

Used in 2019 as a natural sire to our registered cowherd.

## 802 AAR Renegade 802

BULL REG# 19232024 Tattoo: 802 DOB: 01/24/18

RITO 707 OF IDEAL 3407 7075  
**FAIRVIEW RENEGADE 4166**  
 FAIRVIEW LADY TRAVELER X85

R R RITO 707  
 IDEAL 3407 OF 1418 076  
 LEACHMAN RIGHT TIME  
 B C C LADY TRAVELER 13B 93  
 CONNEALY THUNDER  
 SITZ THUNDERBOLT 0189  
**BARBARAMERE 666 AAR**  
 BARBARAMERE 467 AAR

SITZ THUNDERBOLT 0189  
 SITZ ELSIEMERE 1779  
 MCD AAR JUNEAU 944  
 BARBARAMERE 2081 AAR

AAR RANCH SCORES			
FOOT	3.5	CALV. E.	3
DISPO.	4	CALF VIG.	
WN WT.	4	FERTILITY	4
FRAME	3.5	D. MILK	4
MUSCLING	3.5	UDDER	3
FLESHING	4	MOTHERING	3.5

AAA EPD	BW EPD	WW EPD	YW EPD	MILK EPD	MB EPD	REA EPD	ACT. SCR
	0.5	52	86	25	0.22	0.31	38.75
IND. PERFORM	REA RATIO	MB RATIO	BIRTH WT.	205 WT.	NR	365 WT.	YR. RATIO
	98	106	78	650	107	1047	100

Used in 2019 as a natural sire to our registered cowherd.



## 810 AAR Fortunate 810

BULL REG# 19239918 Tattoo: 810 DOB: 01/26/18

SINCLAIR FORTUNATE SON  
**MCD FORTUNATE 506**  
 PERFORMISS 029

SINCLAIR EMULATE 7XT28  
 SINCLAIR BLACKBIRD 2P8 7079  
 COLE CREEK BLACK CEDAR 46P  
 GLORY 1148 TRENDESS 877

V D A R TRAVELER 465  
**TRAVELER LASS 770 A A R**  
 616 LASS 365 A A R

Q A S TRAVELER 23-4  
 V D A R KATHY 16  
 RITO 616 OF 4B20 6807  
 EXT LASS 871 A A R

AAR RANCH SCORES			
FOOT	4	CALV. E.	3
DISPO.	4	CALF VIG.	
WN WT.	3	FERTILITY	3
FRAME	4	D. MILK	3
MUSCLING	2	UDDER	3
FLESHING	3	MOTHERING	3

AAA EPD	BW EPD	WW EPD	YW EPD	MILK EPD	MB EPD	REA EPD	ACT. SCR
	-0.8	45	73	22	0.48	0.23	40
IND. PERFORM	REA RATIO	MB RATIO	BIRTH WT.	205 WT.	NR	365 WT.	YR. RATIO
	96	92	82	646	106	985	100

Used in 2019 as a natural sire to our registered cowherd.

## 819 AAR Resource 819

BULL REG# 19232931 Tattoo: 819 DOB: 01/29/18

RITO 707 OF IDEAL 3407 7075  
**S A V RESOURCE 1441**  
 S A V BLACKCAP MAY 4136

R R RITO 707  
 IDEAL 3407 OF 1418 076  
 S A V 8180 TRAVELER 004  
 S A V MAY 2397

O C C MISSING LINK 830M  
**BARBARAMERE 976 A A R**  
 BARBARAMERE 463 A A R

O C C HEADLINER 661H  
 O C C DIXIE ERICA 946K  
 J D DAIGGER 901  
 BARBARAMERE 271 A A R

AAR RANCH SCORES			
FOOT	4	CALV. E.	1
DISPO.	4.5	CALF VIG.	
WN WT.	4.5	FERTILITY	4
FRAME	3.5	D. MILK	3.5
MUSCLING	4	UDDER	3
FLESHING	4.5	MOTHERING	3.5

AAA EPD	BW EPD	WW EPD	YW EPD	MILK EPD	MB EPD	REA EPD	ACT. SCR
	3.9	60	110	23	0.1	0.75	38
IND. PERFORM	REA RATIO	MB RATIO	BIRTH WT.	205 WT.	NR	365 WT.	YR. RATIO
	113	103	97	605	108	1019	110

Used in 2019 as a natural sire to our registered cowherd.



# 2-YEAR-OLD ANGUS BULLS

The first 10 lots in our 2-year-old offering were used this year as natural sires on our registered cowherd.

## 823 AAR Juneau 823

BULL	REG# 19232043	Tattoo: 823	DOB: 01/30/18	<b>AAR RANCH SCORES</b>			
O C C JUNEAU 807J <b>MCD AAR JUNEAU 944</b> MID AMBUSHESS 354 AAR CONVERTABULL 401 <b>BARBARAMERE 6091 AAR</b> BARBARAMERE 263 A A R				FOOT	4	CALV. E.	4
O C C EMBLAZON 854E O C C DIXIE ERICA 903E C A FUTURE DIRECTION 5321 TRANS AMBUSHESS 147 WILLEKES CONVERTER 4402-9 BARBARA PERFECTION 2058 AAR LEACHMAN RIGHT TIME BARBARAMERE 080 A A R				DISPO.	4	CALF VIG.	
				WN WT.	3.5	FERTILITY	4
				FRAME	3.5	D. MILK	3
				MUSCLING	3.5	UDDER	3
				FLESHING	4	MOTHERING	3
<b>AAA EPD</b>	BW EPD	WW EPD	YW EPD	MILK EPD	MB EPD	REA EPD	ACT. SCR
	-0.6	43	72	31	0.51	0.23	40.25
<b>IND. PERFORM</b>	REA RATIO	MB RATIO	BIRTH WT.	205 WT.	NR	365 WT.	YR. RATIO
	91	123	66	631	103	1028	103

Used in 2019 as a natural sire to our registered cowherd.

## 829 AAR Resource 829

BULL	REG# 19232930	Tattoo: 829	DOB: 01/31/18	<b>AAR RANCH SCORES</b>			
RITO 707 OF IDEAL 3407 7075 <b>S A V RESOURCE 1441</b> S A V BLACKCAP MAY 4136 O C C HOMER 650H <b>HOMER LASS 969 A A R</b> FINAL LASS 751 A A R				FOOT	3	CALV. E.	1
R R RITO 707 IDEAL 3407 OF 1418 076 S A V 8180 TRAVELER 004 S A V MAY 2397 O C C FOCUS 813F O C C DIXIE ERICA 816B S A V FINAL ANSWER 0035 112 LASS 563 A A R				DISPO.	4	CALF VIG.	
				WN WT.	4.5	FERTILITY	4
				FRAME	4	D. MILK	3.5
				MUSCLING	3	UDDER	3
				FLESHING	4	MOTHERING	3
<b>AAA EPD</b>	BW EPD	WW EPD	YW EPD	MILK EPD	MB EPD	REA EPD	ACT. SCR
	3.1	66	120	23	0	0.73	36
<b>IND. PERFORM</b>	REA RATIO	MB RATIO	BIRTH WT.	205 WT.	NR	365 WT.	YR. RATIO
	103	76	94	654	117	1104	119

Used in 2019 as a natural sire to our registered cowherd.



Lot: 825

## 8001 AAR Recourse 8001

BULL	REG# 19232886	Tattoo: 8001	DOB: 02/09/18	<b>AAR RANCH SCORES</b>			
RITO 707 OF IDEAL 3407 7075 <b>S A V RESOURCE 1441</b> S A V BLACKCAP MAY 4136 A A R EXTRA 814 <b>BARBARAMERE EXTRA 3056 AAR</b> BARBARAMERE 856 A A R				FOOT	4	CALV. E.	4
R R RITO 707 IDEAL 3407 OF 1418 076 S A V 8180 TRAVELER 004 S A V MAY 2397 N BAR EMULATION EXT A A R TRAVELER ROSE 362 H A IMAGE MAKER 0415 BARBARAMERE 084 A A R				DISPO.	5	CALF VIG.	
				WN WT.	4	FERTILITY	4
				FRAME	3	D. MILK	3
				MUSCLING	3.5	UDDER	3
				FLESHING	4	MOTHERING	3
<b>AAA EPD</b>	BW EPD	WW EPD	YW EPD	MILK EPD	MB EPD	REA EPD	ACT. SCR
	0.1	54	97	22	0.13	0.59	38.25
<b>IND. PERFORM</b>	REA RATIO	MB RATIO	BIRTH WT.	205 WT.	NR	365 WT.	YR. RATIO
	94	108	73	573	103	955	103

Used in 2019 as a natural sire to our registered cowherd.

## 825 AAR Capitalist 825

BULL	REG# 19234469	Tattoo: 825	DOB: 01/30/18	<b>AAR RANCH SCORES</b>			
CONNEALY CAPITALIST 028 <b>AB-LVS CAPITALIST 4507</b> AB-LVS EMMA 096 COLE CREEK CEDAR RIDGE 1V <b>CEDAR LASS367AAR</b> FREIGHTER LASS 184 A A R				FOOT	3.5	CALV. E.	3
S A V FINAL ANSWER 0035 PRIDES PITA OF CONANGA 8821 WMR TIMELESS 458 OX BOW EMMA E396 COLE CREEK BLACK CEDAR 46P COLE CREEK CLOVANADA 49S CONNEALY FREIGHTLINER A A R CAP LASS 163				DISPO.	4.5	CALF VIG.	
				WN WT.	4	FERTILITY	3.5
				FRAME	3	D. MILK	4
				MUSCLING	4	UDDER	2.5
				FLESHING	4	MOTHERING	3
<b>AAA EPD</b>	BW EPD	WW EPD	YW EPD	MILK EPD	MB EPD	REA EPD	ACT. SCR
	-1.8	59	103	25	0.39	0.41	36
<b>IND. PERFORM</b>	REA RATIO	MB RATIO	BIRTH WT.	205 WT.	NR	365 WT.	YR. RATIO
	92	106	73	620	111		

Used in 2019 as a natural sire to our registered cowherd.

## Y805 YA RITO 805

BULL	REG# 19249802	Tattoo: 805	DOB: 02/04/18	<b>AAR RANCH SCORES</b>			
HRA RITO 8296 330 <b>YA RITO 638</b> YA BLACK BELLE 862 YA BLACK CEDAR 135 <b>YA PRIDE 376</b> YA Pride 121				FOOT	3.5	CALV. E.	2
COLEMAN RITO 149-8296 HRA LASSIE 767 YA IMAGE MAKER 623 YA BLACK BELLE 505 COLE CREEK BLACK CEDAR 46P YA BLACK BELLE 842 COLE CREEK BLACK CEDAR 46P YA PRIDE 639				DISPO.	3.5	CALF VIG.	
				WN WT.	4	FERTILITY	3
				FRAME	4	D. MILK	3
				MUSCLING	2.5	UDDER	3
				FLESHING	3	MOTHERING	3
<b>AAA EPD</b>	BW EPD	WW EPD	YW EPD	MILK EPD	MB EPD	REA EPD	ACT. SCR
	3.2	45	76	23	0.11	0.56	39.25
<b>IND. PERFORM</b>	REA RATIO	MB RATIO	BIRTH WT.	205 WT.	NR	365 WT.	YR. RATIO

Used in 2019 as a natural sire to our registered cowherd.

Where does my help come from? My help comes from the Lord, the maker of heaven and earth. – Psalm 121: 1-2

### 805 AAR Genesis 805

AAR RANCH SCORES							
BULL	REG# 19234457	Tattoo: 805	DOB: 01/24/18	FOOT	4	CALV. E.	3
TE MANIA BERKLEY B1				TE MANIA YORKSHIRE Y437			
PATHFINDER GENESIS G357				TE MANIA LOWAN Z53			
PATHFINDER DIRECTION D245				ARDROSSAN DIRECTION W109			
MCD AAR JUNEAU 944				PATHFINDER ADAVALE A433			
JUNEAU LASS 4091 AAR				O C C JUNEAU 807J			
112 LASS 563 A A R				MID AMBUSHESS 354			
				RITO 112 OF 2536 RITO 616			
				KRUGERRAND LASS 279 A A R			
AAA EPD	BW EPD	WW EPD	YW EPD	MILK EPD	MB EPD	REA EPD	ACT. SCR
	-0.3	48	85	28	0.51	0.61	39
IND. PERFORM	REA RATIO	MB RATIO	BIRTH WT.	205 WT.	NR	365 WT.	YR. RATIO
	105	87	70	548	98	863	100



Used in 2019 as a natural sire to our registered cowherd.

### 808 AAR Capitolist 808

AAR RANCH SCORES							
BULL	REG# 19248981	Tattoo: 808	DOB: 01/26/18	FOOT	3	CALV. E.	3
CONNELY CAPITALIST 028				S A V FINAL ANSWER 0035			
AB-LVS CAPITALIST 4507				PRIDES PITA OF CONANGA 8821			
AB-LVS EMMA 096				WMR TIMELESS 458			
SYDGEN MANDATE 6079				OX BOW EMMA E396			
BARBARA PERFECTION 2078 AAR				S S OBJECTIVE T510 0T26			
BARBARA PERFECTION 672 A A R				SYDGEN GINA 4235			
				G 13 STRUCTURE			
				BARBAR PERFECTING 553 A A R			
AAA EPD	BW EPD	WW EPD	YW EPD	MILK EPD	MB EPD	REA EPD	ACT. SCR
	0.5	58	103	22	0.58	0.54	38.25
IND. PERFORM	REA RATIO	MB RATIO	BIRTH WT.	205 WT.	NR	365 WT.	YR. RATIO
	111	110	76	580	104	921	107



### 807 AAR Renegade 807

AAR RANCH SCORES							
BULL	REG# 19232034	Tattoo: 807	DOB: 01/24/18	FOOT	3	CALV. E.	5
RITO 707 OF IDEAL 3407 7075				R R RITO 707			
FAIRVIEW RENEGADE 4166				IDEAL 3407 OF 1418 076			
FAIRVIEW LADY TRAVELER X85				LEACHMAN RIGHT TIME			
KOU PAL ADVANCE 28				B C C LADY TRAVELER 138 93			
BARBARAMERE 569 AAR				KOU PAL JUNEAU 797			
BARBARAMERE 894 A A R				KOU PAL EBONETTE 734			
				H A IMAGE MAKER 0415			
				BARBARAMERE 460 A A R			
AAA EPD	BW EPD	WW EPD	YW EPD	MILK EPD	MB EPD	REA EPD	ACT. SCR
	-3.3	43	69	26	0.23	0.33	37
IND. PERFORM	REA RATIO	MB RATIO	BIRTH WT.	205 WT.	NR	365 WT.	YR. RATIO
	104	106	64	547	98	829	97

### 809 AAR Resource 809

AAR RANCH SCORES							
BULL	REG# 19232922	Tattoo: 809	DOB: 01/26/18	FOOT	4	CALV. E.	2
RITO 707 OF IDEAL 3407 7075				R R RITO 707			
S A V RESOURCE 1441				IDEAL 3407 OF 1418 076			
S A V BLACKCAP MAY 4136				S A V 8180 TRAVELER 004			
B C MID EMBLAZON 854E 702				S A V MAY 2397			
EMBLAZON IDA 057 A A R				O C C EMBLAZON 854E			
IMAGE IDA 870 A A R				GIBBET HILL MIGNONNE E37			
				H A IMAGE MAKER 0415			
				BUSHWACKER IDA 6051 A A R			
AAA EPD	BW EPD	WW EPD	YW EPD	MILK EPD	MB EPD	REA EPD	ACT. SCR
	3.1	63	113	21	0.18	0.88	39
IND. PERFORM	REA RATIO	MB RATIO	BIRTH WT.	205 WT.	NR	365 WT.	YR. RATIO
	111	117	90	595	107	923	108



Where does my help come from? My help comes from the Lord, the maker of heaven and earth. – Psalm 121: 1-2

**811 AAR Fortunate 811**

BULL	REG# 19239919	Tattoo: 811	DOB: 01/27/18	<b>AAR RANCH SCORES</b>			
SINCLAIR FORTUNATE SON <b>MCD FORTUNATE 506</b> PERFORMISS 029 DDA SURE ENOUGH 6D <b>BLACKCAP PRIDE 791</b> GLAUS BLACKCAP PRIDE 113				FOOT	2.5	CALV. E.	3
SINCLAIR EMULATE 7XT28 SINCLAIR BLACKBIRD 2P8 7079 COLE CREEK BLACK CEDAR 46P GLORY 1148 TRENDESS 877 DDA EMBLAZON 28A DDA MARY 156 C H QUANTUM 3330 A R F LADY TRAVELER 93				DISPO.	3	CALF VIG.	
				WN WT.	2.5	FERTILITY	3.5
				FRAME	3.5	D. MILK	3.5
				MUSCLING	2.5	UDDER	3
				FLESHING	3	MOTHERING	3
<b>AAA EPD</b>	BW EPD	WW EPD	YW EPD	MILK EPD	MB EPD	REA EPD	ACT. SCR
	-0.6	39	65	21	0.42	0.3	34
<b>IND. PERFORM</b>	REA RATIO	MB RATIO	BIRTH WT.	205 WT.	NR	365 WT.	YR. RATIO
	105	107	77	551	90	793	91

**816 AAR Fortunate 816**

BULL	REG# 19239921	Tattoo: 816	DOB: 01/28/18	<b>AAR RANCH SCORES</b>			
SINCLAIR FORTUNATE SON <b>MCD FORTUNATE 506</b> PERFORMISS 029 SITZ NEW DESIGN 349M <b>IDA DESIGN 757 A A R</b> RIGHT TIME IDA 275 A A R				FOOT	4	CALV. E.	5
SINCLAIR EMULATE 7XT28 SINCLAIR BLACKBIRD 2P8 7079 COLE CREEK BLACK CEDAR 46P GLORY 1148 TRENDESS 877 BON VIEW NEW DESIGN 1407 SITZ PRIDE 166K LEACHMAN RIGHT TIME CASH FLOW IDA 853 A A R				DISPO.	2.5	CALF VIG.	
				WN WT.	2.5	FERTILITY	3.5
				FRAME	4	D. MILK	3
				MUSCLING	2.5	UDDER	3
				FLESHING	3	MOTHERING	3
<b>AAA EPD</b>	BW EPD	WW EPD	YW EPD	MILK EPD	MB EPD	REA EPD	ACT. SCR
	-3.5	38	66	25	0.5	0.25	37.5
<b>IND. PERFORM</b>	REA RATIO	MB RATIO	BIRTH WT.	205 WT.	NR	365 WT.	YR. RATIO
	99	96	66	589	97	835	96



**817 AAR Renegade 817**

BULL	REG# 19232040	Tattoo: 817	DOB: 01/29/18	<b>AAR RANCH SCORES</b>			
RITO 707 OF IDEAL 3407 7075 <b>FAIRVIEW RENEGADE 4166</b> FAIRVIEW LADY TRAVELER X85 QUAKER HILL RAMPAGE 0A36 <b>FLORABELLE 6054 AAR</b> FLORABELLE EXTRA 7057 A A R				FOOT	4	CALV. E.	4
R R RITO 707 IDEAL 3407 OF 1418 076 LEACHMAN RIGHT TIME B C C LADY TRAVELER 13B 93 MCC DAYBREAK QHF BLACKCAP 6E2 OF 4V16 4355 A A R EXTRA 814 FLORABELLE 588 A A R				DISPO.	3	CALF VIG.	
				WN WT.	3	FERTILITY	3
				FRAME	3.5	D. MILK	3
				MUSCLING	2	UDDER	3
				FLESHING	2.5	MOTHERING	3.5
<b>AAA EPD</b>	BW EPD	WW EPD	YW EPD	MILK EPD	MB EPD	REA EPD	ACT. SCR
	0.2	44	74	23	0.03	0.48	38.75
<b>IND. PERFORM</b>	REA RATIO	MB RATIO	BIRTH WT.	205 WT.	NR	365 WT.	YR. RATIO
	101	78	70	584	96	819	94

**812 AAR Absolute 812**

BULL	REG# 19232039	Tattoo: 812	DOB: 01/28/18	<b>AAR RANCH SCORES</b>			
K C F BENNETT ABSOLUTE <b>AAR ABSOLUTE 603</b> WINDY ROSE 476 AAR SITZ THUNDERBOLT 0189 <b>BLACKCAP 606 AAR</b> BLACKCAP EXTRA 9056				FOOT	3.5	CALV. E.	3
S A V FINAL ANSWER 0035 THOMAS MISS LUCY 5152 APEX WINDY 078 HOMER ROSE 063 A A R CONNEALY THUNDER SITZ ELSIEMERE 1779 NICHOLS EXTRA K205 RITO BLACKCAP 651 A A R				DISPO.	4	CALF VIG.	
				WN WT.	4	FERTILITY	3
				FRAME	3.5	D. MILK	3
				MUSCLING	3	UDDER	3
				FLESHING	3	MOTHERING	4
<b>AAA EPD</b>	BW EPD	WW EPD	YW EPD	MILK EPD	MB EPD	REA EPD	ACT. SCR
	0.1	53	95	24	0.56	0.35	42.75
<b>IND. PERFORM</b>	REA RATIO	MB RATIO	BIRTH WT.	205 WT.	NR	365 WT.	YR. RATIO
	99	118	73	655	107	954	109

**820 AAR Capitalist 820**

BULL	REG# 19248982	Tattoo: 820	DOB: 01/29/18	<b>AAR RANCH SCORES</b>			
CONNEALY CAPITALIST 028 <b>AB-LVS CAPITALIST 4507</b> AB-LVS EMMA 096 A A R FINAL RITO 926 <b>NACOMA RITO 4157 AAR</b> GLAUS NACOMA 811				FOOT	3	CALV. E.	2
S A V FINAL ANSWER 0035 PRIDES PITA OF CONANGA 8821 WMR TIMELESS 458 OX BOW EMMA E396 S S RITO RITO R011 2R12 BARBARAMERE 762 A A R O C C HOMER 650H GLAUS NACOMA 629				DISPO.	2.5	CALF VIG.	
				WN WT.	3.5	FERTILITY	3
				FRAME	2	D. MILK	3
				MUSCLING	4	UDDER	4
				FLESHING	4	MOTHERING	3
<b>AAA EPD</b>	BW EPD	WW EPD	YW EPD	MILK EPD	MB EPD	REA EPD	ACT. SCR
	-0.3	51	87	20	0.44	0.21	40
<b>IND. PERFORM</b>	REA RATIO	MB RATIO	BIRTH WT.	205 WT.	NR	365 WT.	YR. RATIO
	81	104	84	549	98	826	96

Who is it that overcomes the world? Only he who believes that Jesus is the son of God. – 1 John 5:5



### 828 AAR Fortunate 828

BULL REG# 19239922 Tattoo: 828 DOB: 01/30/18  
 SINCLAIR FORTUNATE SON  
**MCD FORTUNATE 506**  
 PERFORMISS 029  
 MCD AAR JUNEAU 944  
**JUNEAU IDA 4150 AAR**  
 EMBLAZON IDA 057 A A R

SINCLAIR EMULATE 7XT28  
 SINCLAIR BLACKBIRD 2P8 7079  
 COLE CREEK BLACK CEDAR 46P  
 GLORY 1148 TREDESS 877  
 O C C JUNEAU 807J  
 MID AMBUSHESS 354  
 B C MID EMBLAZON 854E 702  
 IMAGE IDA 870 A A R

AAR RANCH SCORES			
FOOT	4	CALV. E.	2.5
DISPO.	2.5	CALF VIG.	
WN WT.	4	FERTILITY	3
FRAME	3	D. MILK	3
MUSCLING	4	UDDER	3
FLESHING	4	MOTHERING	3.5

AAA EPD	BW EPD	WW EPD	YW EPD	MILK EPD	MB EPD	REA EPD	ACT. SCR
	0.1	52	91	27	0.45	0.59	37
IND. PERFORM	REA RATIO	MB RATIO	BIRTH WT.	205 WT.	NR	365 WT.	YR. RATIO
	109	96	80	588	105	924	107

### 826 AAR Capitalist 826

BULL REG# 19248983 Tattoo: 826 DOB: 01/30/18  
 CONNEALY CAPITALIST 028  
**AB-LVS CAPITALIST 4507**  
 AB-LVS EMMA 096  
 MCD AAR JUNEAU 944  
**944 BARBARAMERE 2059 AAR**  
 BARBARAMERE 361 A A R

S A V FINAL ANSWER 0035  
 PRIDES PITA OF CONANGA 8821  
 WMR TIMELESS 458  
 OX BOW EMMA E396  
 O C C JUNEAU 807J  
 MID AMBUSHESS 354  
 CONNEALY FREIGHTLINER  
 BARBARAMERE 958 A A R

AAR RANCH SCORES			
FOOT	3	CALV. E.	2
DISPO.	4	CALF VIG.	
WN WT.	4	FERTILITY	3.5
FRAME	4	D. MILK	4
MUSCLING	3.5	UDDER	2
FLESHING	4	MOTHERING	3

AAA EPD	BW EPD	WW EPD	YW EPD	MILK EPD	MB EPD	REA EPD	ACT. SCR
	1.2	53	94	26	0.44	0.57	40.75
IND. PERFORM	REA RATIO	MB RATIO	BIRTH WT.	205 WT.	NR	365 WT.	YR. RATIO
	112	104	89	577	103	895	104



### 827 AAR Genesis 827

BULL REG# 19234475 Tattoo: 827 DOB: 01/30/18  
 TE MANIA BERKLEY B1  
**PATHFINDER GENESIS 6357**  
 PATHFINDER DIRECTION 0245  
 DDA SURE ENOUGH 6D  
**BARBARA PERFECTION 167 A A R**  
 BARBARA PERFECTION 774 A A R

TE MANIA YORKSHIRE Y437  
 TE MANIA LOWAN 253  
 ARDROSSAN DIRECTION W109  
 PATHFINDER ADAVALE A433  
 DDA EMBLAZON 28A  
 DDA MARY 156  
 S A V 8180 TRAVELER 004  
 BARBARA PERFECTION 273 A A R

AAR RANCH SCORES			
FOOT	3	CALV. E.	4
DISPO.	3	CALF VIG.	
WN WT.	3	FERTILITY	3
FRAME	4.5	D. MILK	3
MUSCLING	2	UDDER	3
FLESHING	2.5	MOTHERING	

AAA EPD	BW EPD	WW EPD	YW EPD	MILK EPD	MB EPD	REA EPD	ACT. SCR
	-0.4	45	78	22	0.47	0.37	39
IND. PERFORM	REA RATIO	MB RATIO	BIRTH WT.	205 WT.	NR	365 WT.	YR. RATIO
	94	107	70	541	97	850	99

### 830 AAR Resource 830

BULL REG# 19232887 Tattoo: 830 DOB: 01/31/18  
 RITO 707 OF IDEAL 3407 7075  
**S A V RESOURCE 1441**  
 S A V BLACKCAP MAY 4136  
 COLE CREEK BLACK CEDAR 1100  
**COLE CREEK MARIE 613**  
 COLE CREEK MARIE 48S

R. R. RITO 707  
 IDEAL 3407 OF 1418 076  
 S A V 8180 TRAVELER 004  
 S A V MAY 2397  
 COLE CREEK BLACK CEDAR 46P  
 COLE CREEK JUANADA BIRD 38N  
 COLE CREEK BLACK CEDAR 46P  
 COLE CREEK MARIE 51P

AAR RANCH SCORES			
FOOT	4.5	CALV. E.	1.5
DISPO.	4	CALF VIG.	
WN WT.	3	FERTILITY	4
FRAME	3	D. MILK	3
MUSCLING	4	UDDER	3
FLESHING	4	MOTHERING	3

AAA EPD	BW EPD	WW EPD	YW EPD	MILK EPD	MB EPD	REA EPD	ACT. SCR
	3.5	54	98	22	0.17	0.65	38
IND. PERFORM	REA RATIO	MB RATIO	BIRTH WT.	205 WT.	NR	365 WT.	YR. RATIO
	104	93	95	577	103	851	99



Who is it that overcomes the world? Only he who believes that Jesus is the son of God. – 1 John 5:5



### 832 AAR Capitolist 832

BULL REG# 19248984 Tattoo: 832 DOB: 02/01/18  
 CONNEALY CAPITALIST 028 S A V FINAL ANSWER 0035  
 AB-LVS CAPITALIST 4507 PRIDES PITA OF CONANGA 8821  
 AB-LVS EMMA 096 WMR TIMELESS 458  
 A A R BUSHWACKER 417 OX BOW EMMA E396  
 BUSHWACKER IDA 6051 A A R B C C BUSHWACKER 41-93  
 EXTRA IDA 487 A A R BARBARAMERE 084 A A R  
 A A R EXTRA 814  
 BANDO IDA 091 A A R

AAR RANCH SCORES			
FOOT	3.5	CALV. E.	2.5
DISPO.	4	CALF VIG.	
WN WT.	4	FERTILITY	3.5
FRAME	3	D. MILK	3.5
MUSCLING	4	UDDER	2.5
FLESHING	3	MOTHERING	3

AAA EPD	BW EPD	WW EPD	YW EPD	MILK EPD	MB EPD	REA EPD	ACT. SCR
	0.4	54	94	22	0.3	0.43	36.25
IND. PERFORM	REA RATIO	MB RATIO	BIRTH WT.	205 WT.	NR	365 WT.	YR. RATIO
	97	94	78	613	100	904	103

### 831 AAR Genesis 831

BULL REG# 19234486 Tattoo: 831 DOB: 02/01/18  
 TE MANIA BERKLEY B1 TE MANIA YORKSHIRE Y437  
 PATHFINDER GENESIS G357 TE MANIA LOWAN Z53  
 PATHFINDER DIRECTION D245 ARDROSSAN DIRECTION W109  
 A A R EXTRA 814 PATHFINDER ADAVALE A433  
 FLORABELLE EXTRA 7057 A A R N BAR EMULATION EXT  
 FLORABELLE 588 A A R A A R TRAVELER ROSE 362  
 H A R B HIGH PLAINS 975 JH  
 FLORABELLE 380 A A R

AAR RANCH SCORES			
FOOT	4	CALV. E.	1
DISPO.	3	CALF VIG.	
WN WT.	3.5	FERTILITY	3
FRAME	4.5	D. MILK	3
MUSCLING	3	UDDER	3
FLESHING	3.5	MOTHERING	3

AAA EPD	BW EPD	WW EPD	YW EPD	MILK EPD	MB EPD	REA EPD	ACT. SCR
	4	50	90	25	0.43	0.35	40
IND. PERFORM	REA RATIO	MB RATIO	BIRTH WT.	205 WT.	NR	365 WT.	YR. RATIO
	100	100	96	589	100	912	100



### 833 AAR Resource 833

BULL REG# 19232885 Tattoo: 833 DOB: 02/01/18  
 RITO 707 OF IDEAL 3407 7075 R R RITO 707  
 S A V RESOURCE 1441 IDEAL 3407 OF 1418 076  
 S A V BLACKCAP MAY 4136 S A V 8180 TRAVELER 004  
 V D A R REALLY WINDY 4097 A A R REALLY WINDY 1205  
 BARBARAMERE 372 AAR V D A R BLACKBIRD 2031  
 608 BARBARAMERE 1150 A A R MID PERFORMER 608  
 BARBARAMERE 292 A A R

AAR RANCH SCORES			
FOOT	3	CALV. E.	2.5
DISPO.	3	CALF VIG.	
WN WT.	3.5	FERTILITY	3.5
FRAME	2.5	D. MILK	3
MUSCLING	3.5	UDDER	3
FLESHING	3.5	MOTHERING	3

AAA EPD	BW EPD	WW EPD	YW EPD	MILK EPD	MB EPD	REA EPD	ACT. SCR
	0	56	97	17	0.15	0.59	33
IND. PERFORM	REA RATIO	MB RATIO	BIRTH WT.	205 WT.	NR	365 WT.	YR. RATIO
	101	102	72	533	96	799	93

Where does my help come from? My help comes from the Lord, the maker of heaven and earth. – Psalm 121: 1-2



### 838 AAR Fortunate 838

AAR RANCH SCORES							
FOOT	4	CALV. E.	3				
DISPO.	1.5	CALF VIG.					
WN WT.	3.5	FERTILITY	4				
FRAME	4.5	D. MILK	3.5				
MUSCLING	3	UDDER	3				
FLESHING	2.5	MOTHERING	4				
AAA EPD	BW EPD	WW EPD	YW EPD	MILK EPD	MB EPD	REA EPD	ACT. SCR
	0.5	47	87	26	0.64	0.43	38
IND. PERFORM	REA RATIO	MB RATIO	BIRTH WT.	205 WT.	NR	365 WT.	YR. RATIO
	96	100	83	649	106	964	110

BULL REG# 19239923 Tattoo: 838 DOB: 02/03/18  
 SINCLAIR FORTUNATE SON  
**MCD FORTUNATE 506**  
 PERFORMISS 029  
 ISU IMAGING Q 9111  
**ROSE IMAGING 666 A A R**  
 EXACTO ROSE 056 A A R  
 SINCLAIR EMULATE 7XT28  
 SINCLAIR BLACKBIRD 2P8 7079  
 COLE CREEK BLACK CEDAR 46P  
 GLORY 1148 TRENDESS 877  
 G T EXPO  
 SUMMITCREST PRIDE 351F  
 J L B EXACTO 416  
 A A R TRAVELER ROSE 362

### 834 AAR Capitolist 834

AAR RANCH SCORES							
FOOT	3	CALV. E.	2.5				
DISPO.	4	CALF VIG.					
WN WT.	3	FERTILITY	3				
FRAME	3	D. MILK	3				
MUSCLING	4.5	UDDER	3				
FLESHING	4	MOTHERING	3.5				
AAA EPD	BW EPD	WW EPD	YW EPD	MILK EPD	MB EPD	REA EPD	ACT. SCR
	-0.3	59	99	25	0.37	0.54	38.5
IND. PERFORM	REA RATIO	MB RATIO	BIRTH WT.	205 WT.	NR	365 WT.	YR. RATIO
	108	95	80	595	107	891	104

BULL REG# 19248985 Tattoo: 834 DOB: 02/01/18  
 CONNEALY CAPITALIST 028  
**AB-LVS CAPITALIST 4507**  
 AB-LVS EMMA 096  
 APEX WINDY 078  
**WINDY LASS 387 AAR**  
 616 567 A A R  
 S A V FINAL ANSWER 0035  
 PRIDES PITA OF CONANGA 8821  
 WMR TIMELESS 458  
 OX BOW EMMA E396  
 H A R B WINDY 702 JH  
 APEXETTE LUGY 6037  
 RITO 616 OF 4B20 6807  
 EXT LASS 672 A A R

### 840 Commercial Bull 840

AAR RANCH SCORES							
FOOT	3.5	CALV. E.	2				
DISPO.	3	CALF VIG.					
WN WT.	3.5	FERTILITY	3				
FRAME	4	D. MILK	3				
MUSCLING	2	UDDER	3				
FLESHING	2.5	MOTHERING	3				
AAA EPD	BW EPD	WW EPD	YW EPD	MILK EPD	MB EPD	REA EPD	ACT. SCR
							34.5
IND. PERFORM	REA RATIO	MB RATIO	BIRTH WT.	205 WT.	NR	365 WT.	YR. RATIO

BULL REG# Tattoo: 840  
 YA EQUATOR 361  
**YOUNKIN BELLE BOY 5182**  
 YA QUEEN 182  
 HRA RITO 8296 330  
**YA BLACK BELLE 635**  
 YA BLACK BELLE 966  
 YA EQUATOR 825  
 YA BLACK BELLE 862  
 ADVANTAGE TRAVELER 749 JDY  
 YA QUEEN 808  
 COLEMAN RITO 149-8296  
 HRA LASSIE 767  
 YA INTRIGUE 716  
 YA BLACK BELLE 645

### 835 AAR Juneau 835

AAR RANCH SCORES							
FOOT	4	CALV. E.	1				
DISPO.	3.5	CALF VIG.					
WN WT.	3.5	FERTILITY	4				
FRAME	4	D. MILK	4				
MUSCLING	3.5	UDDER	2.5				
FLESHING	4	MOTHERING	3				
AAA EPD	BW EPD	WW EPD	YW EPD	MILK EPD	MB EPD	REA EPD	ACT. SCR
	3.4	48	87	30	0.6	0.74	38
IND. PERFORM	REA RATIO	MB RATIO	BIRTH WT.	205 WT.	NR	365 WT.	YR. RATIO
	116	106	92	619	101	902	103

BULL REG# 19232045 Tattoo: 835 DOB: 02/02/18  
 O C C JUNEAU 807J  
**MCD AAR JUNEAU 944**  
 MID AMBUSHNESS 354  
 SPUR FRANCHISE OF GARTON  
**SPUR TAURUS 655 AAR**  
 POUNDER TAURUS 4066 AAR  
 O C C EMBLAZON 854E  
 O C C DIXIE ERIGA 903E  
 C A FUTURE DIRECTION 5321  
 TRANS AMBUSHNESS 147  
 SPUR FRANCHISE 707D  
 HGH IRENE LASS 0135  
 A A A POUNDER 141  
 21X TAURUS 1062 A A R





Where does my help come from? My help comes from the Lord, the maker of heaven and earth. – Psalm 121: 1-2

**841 AAR Resource 841**

BULL	REG# 19232890	Tattoo: 841	DOB: 02/05/18				
RITO 707 OF IDEAL 3407 7075 S A V RESOURCE 1441 S A V BLACKCAP MAY 4136 COLE CREEK BLACK CEDAR 46P BARBARA PERFECTION 2058 AAR BARBARA PERFECTION 158 A A R							
R R RITO 707 IDEAL 3407 OF 1418 076 S A V 8180 TRAVELER 004 S A V MAY 2397 G H QUANTUM 6247 COLE CREEK CLOVA JUANADA 67 J L B EXACTO 416 BARBAR PERFECTING 553 A A R							
AAR RANCH SCORES							
FOOT	5	CALV. E.	3	DISPO.	3.5	CALF VIG.	
WN WT.	3	FERTILITY	4	FRAME	2	D. MILK	3
MUSLING	3.5	UDDER	3	FLESHING	4	MOTHERING	3.5
AAA EPD	BW EPD	WW EPD	YW EPD	MILK EPD	MB EPD	REA EPD	ACT. SCR
	0.5	47	85	20	0.14	0.78	37
IND. PERFORM	REA RATIO	MB RATIO	BIRTH WT.	205 WT.	NR	365 WT.	YR. RATIO
	111	90	75	539	97	793	93

**848 AAR Performer 848**

BULL	REG# 19232046	Tattoo: 848	DOB: 01/13/19				
MCD PERFORMER 472 MID ELDORENE 6511 MCD AAR JUNEAU 944 BARBARAMERE 270 AAR BARBARAMERE EXTRA 079 A A R							
SCHAFFER 21C OF 514 1005 CHASE 878 LADY BANDO 07-514 B C MID EMBLAZON 854E 702 MID ELDORENE 384 O C C JUNEAU 807J MID AMBUSHESS 354 A A R EXTRA 814 BARBARAMERE 263 A A R							
AAR RANCH SCORES							
FOOT	5	CALV. E.	3	DISPO.	3	CALF VIG.	
WN WT.	3.5	FERTILITY	4	FRAME	4	D. MILK	3.5
MUSLING	3	UDDER	3	FLESHING	4	MOTHERING	3
AAA EPD	BW EPD	WW EPD	YW EPD	MILK EPD	MB EPD	REA EPD	ACT. SCR
	-0.8	41	66	29	0.24	0.37	30.5
IND. PERFORM	REA RATIO	MB RATIO	BIRTH WT.	205 WT.	NR	365 WT.	YR. RATIO
	99	100	79	607	109	793	92

**843 AAR Capitalist 843**

BULL	REG# 19248986	Tattoo: 843	DOB: 02/07/18				
AB-LVS CAPITALIST 4507 AB-LVS EMMA 096 B C MATRIX 4132 OX BOW PRIDE 0129 BERBOS PRIDE 3231							
S A V FINAL ANSWER 0035 PRIDES PITA OF CONANGA 8821 WMR TIMELESS 458 OX BOW EMMA E396 O C C EMBLAZON 854E CAF PURE PRIDE EXT 99 HBR BIG VALLEY 9-023 SITZ PRIDE 2328							
AAR RANCH SCORES							
FOOT	3	CALV. E.	2	DISPO.	4	CALF VIG.	
WN WT.	4	FERTILITY	3	FRAME	3	D. MILK	3
MUSLING	3.5	UDDER	3	FLESHING	3.5	MOTHERING	3
AAA EPD	BW EPD	WW EPD	YW EPD	MILK EPD	MB EPD	REA EPD	ACT. SCR
	3	59	102	21	0.2	0.37	37.5
IND. PERFORM	REA RATIO	MB RATIO	BIRTH WT.	205 WT.	NR	365 WT.	YR. RATIO
	88	92	92	572	103	910	106



**845 AAR Fortunate 845**

BULL	REG# 19239925	Tattoo: 845	DOB: 02/08/18				
MCD FORTUNATE 506 PERFORMISS 029 ISU IMAGING Q 9111 BARBARAMERE 658 A A R BARBARAMERE 761 A A R							
SINCLAIR FORTUNATE SON SINCLAIR EMULATE 7XT28 SINCLAIR BLACKBIRD 2P8 7079 COLE CREEK BLACK CEDAR 46P GLORY 1148 TRENDESS 877 G T EXPO SUMMITCREST PRIDE 351F RITO 2RT2 OF 085 RR TRAVELER BARBARAMERE 477 A A R							
AAR RANCH SCORES							
FOOT	3.5	CALV. E.	2	DISPO.	2.5	CALF VIG.	
WN WT.	4	FERTILITY	4	FRAME	4	D. MILK	3
MUSLING	3	UDDER	3	FLESHING	3	MOTHERING	3.5
AAA EPD	BW EPD	WW EPD	YW EPD	MILK EPD	MB EPD	REA EPD	ACT. SCR
	2	52	93	27	0.6	0.24	38.5
IND. PERFORM	REA RATIO	MB RATIO	BIRTH WT.	205 WT.	NR	365 WT.	YR. RATIO
	100	100	93	623	100	961	100

**8003 AAR Fortunate 8003**

BULL	REG# 19239897	Tattoo: 8003	DOB: 02/10/18				
MCD FORTUNATE 506 PERFORMISS 029 MCD AAR JUNEAU 944 JUNEAU LASS 461 AAR CEDAR LASS 2080 AAR							
SINCLAIR FORTUNATE SON SINCLAIR EMULATE 7XT28 SINCLAIR BLACKBIRD 2P8 7079 COLE CREEK BLACK CEDAR 46P GLORY 1148 TRENDESS 877 O C C JUNEAU 807J MID AMBUSHESS 354 COLE CREEK BLACK CEDAR 46P HOMER LASS 969 A A R							
AAR RANCH SCORES							
FOOT	3	CALV. E.	4	DISPO.	3	CALF VIG.	
WN WT.	3.5	FERTILITY	3.5	FRAME	3	D. MILK	4
MUSLING	3	UDDER	3	FLESHING	3	MOTHERING	3.5
AAA EPD	BW EPD	WW EPD	YW EPD	MILK EPD	MB EPD	REA EPD	ACT. SCR
	-0.9	52	83	27	0.42	0.43	33
IND. PERFORM	REA RATIO	MB RATIO	BIRTH WT.	205 WT.	NR	365 WT.	YR. RATIO
	99	85	77	610	109	922	99

Who is it that overcomes the world? Only he who believes that Jesus is the son of God. — 1 John 5:5

### 8005 AAR Equator 8005

BULL	REG# 19261273	Tattoo: 8005	DOB: 02/11/18	<b>AAR RANCH SCORES</b>				
YA EQUATOR 361 <b>YOUNKIN BELLE BOY 5182</b> YA QUEEN 182 YA BLACK CEDAR 135 <b>YA BLUEBIRD 559</b> YA BLUEBIRD 131				YA EQUATOR 825 YA BLACK BELLE 862 ADVANTAGE TRAVELER 749 JDY YA QUEEN 808 COLE CREEK BLACK CEDAR 46P YA BLACK BELLE 842 YA EQUATOR 825 YA BLUEBIRD 750				
<b>AAA EPD</b>		BW EPD	WW EPD	YW EPD	MILK EPD	MB EPD	REA EPD	ACT. SCR
		-2.1	37	65	22	0.16	0.15	38.5
<b>IND. PERFORM</b>		REA RATIO	MB RATIO	BIRTH WT.	205 WT.	NR	365 WT.	YR. RATIO
		87	86	68	498	89	791	92

### 8013 AAR Capitolist 8013

BULL	REG# 19248979	Tattoo: 8013	DOB: 02/17/18	<b>AAR RANCH SCORES</b>				
DONNEALY CAPITALIST 028 <b>AB-LVS CAPITALIST 4507</b> AB-LVS EMMA 096 SILVER STATE PIONEER 338 <b>BARBAMERE 575 AAR</b> BARBAMERE 667 A A R				S A V FINAL ANSWER 0035 PRIDES PITA OF CONANGA 8821 WMR TIMELESS 458 OX BOW EMMA E396 GRANGER PIONEER 052 SILVER STATE QUEEN 853 G A R RETAIL PRODUCT BARBAMERE 263 A A R				
<b>AAA EPD</b>		BW EPD	WW EPD	YW EPD	MILK EPD	MB EPD	REA EPD	ACT. SCR
		1	61	107	23	0.43	0.46	35.75
<b>IND. PERFORM</b>		REA RATIO	MB RATIO	BIRTH WT.	205 WT.	NR	365 WT.	YR. RATIO
		93	118	78	606	109	929	108

### 8007 AAR Belle Boy 8007

BULL	REG# 19232019	Tattoo: 8007	DOB: 02/15/18	<b>AAR RANCH SCORES</b>				
YA EQUATOR 361 <b>YOUNKIN BELLE BOY 5182</b> YA QUEEN 182 HRA RITO 8296 330 <b>YA QUEEN 671</b> YA QUEEN 307				YA EQUATOR 825 YA BLACK BELLE 862 ADVANTAGE TRAVELER 749 JDY YA QUEEN 808 COLEMAN RITO 149-8296 HRA LASSIE 787 YA BLACK CEDAR 182 YA QUEEN 818				
<b>AAA EPD</b>		BW EPD	WW EPD	YW EPD	MILK EPD	MB EPD	REA EPD	ACT. SCR
		2.3	48	80	23	0.07	0.35	35
<b>IND. PERFORM</b>		REA RATIO	MB RATIO	BIRTH WT.	205 WT.	NR	365 WT.	YR. RATIO
		107	81	81	663	109	956	110



### 8012 AAR Fortunate 8012

BULL	REG# 19239917	Tattoo: 8012	DOB: 02/16/18	<b>AAR RANCH SCORES</b>				
SINCLAIR FORTUNATE SON <b>MCD FORTUNATE 506</b> PERMISS 029 SITZ RAINMAKER 6169 <b>GLAUS BLACKCAP 838</b> N F C BLACKCAP 8608				SINCLAIR EMULATE 7XT28 SINCLAIR BLACKBIRD 2P8 7079 COLE CREEK BLACK CEDAR 46P GLORY 1148 TREDESS 877 SITZ RAINMAKER 8987 SITZ BARBAMERE JET 3007 D H D TRAVELER 6807 LEACHMAN BLACKCAP 0037				
<b>AAA EPD</b>		BW EPD	WW EPD	YW EPD	MILK EPD	MB EPD	REA EPD	ACT. SCR
		2.2	53	94	24	0.46	0.5	38
<b>IND. PERFORM</b>		REA RATIO	MB RATIO	BIRTH WT.	205 WT.	NR	365 WT.	YR. RATIO
		110	103	88	575	103	929	108

### 8015 AAR 427 Uno 8015

BULL	REG# 19232020	Tattoo: 8015	DOB: 02/20/18	<b>AAR RANCH SCORES</b>				
O C C A UNO 049 <b>AAR UNO 427</b> BARBAMERE 361 A A R O C C HOMER 650H BARBAMERE 981 A A R BARBAMERE 658 A A R				SITZ UPWARD 307R MYTTY COUNTESS 906 CONNEALY FREIGHTLINER BARBAMERE 958 A A R O C C FOCUS 813F O C C DIXIE ERICA 816B ISU IMAGING Q 9111 BARBAMERE 761 A A R				
<b>AAA EPD</b>		BW EPD	WW EPD	YW EPD	MILK EPD	MB EPD	REA EPD	ACT. SCR
		-0.8	40	70	27	0.34	0.2	34
<b>IND. PERFORM</b>		REA RATIO	MB RATIO	BIRTH WT.	205 WT.	NR	365 WT.	YR. RATIO
		97	104	78	548	98	844	98



Who is it that overcomes the world? Only he who believes that Jesus is the son of God. – 1 John 5:5



### 8026 AAR Convertabull 8026

AAR RANCH SCORES						
FOOT	3	CALV. E.	4			
DISPO.	3	CALF VIG.				
WN WT.	2.5	FERTILITY	4			
FRAME	3	D. MILK	3.5			
MUSCLING	2	UDDER	3			
FLESHING	3	MOTHERING	3.5			

BULL	REG# 19232026	Tattoo: 8026	DOB: 03/01/18			
	WILLEKES CONVERTER 4402-9	RITO 112 OF 2536 RITO 616				
<b>AAR CONVERTABULL 401</b>	BARBARA PERFECTION 2058 AAR	WILLEKES LADY OF 410				
	PARAMONT AMBUSH 2172	COLE CREEK BLACK CEDAR 46P				
<b>AMBUSH TERESSA 0174 A A R</b>	TERESSA 573 A A R	BARBARA PERFECTION 158 A A R				
		BANDOLIER ESTON DURNES 42B				
		E W S MISS BURGESS 1720				
		G A R RETAIL PRODUCT				
		DIV TERESSA 877 A A R				

AAA EPD	BW EPD	WW EPD	YW EPD	MILK EPD	MB EPD	REA EPD	ACT. SCR
	-1.5	37	60	24	0.4	0.28	38.25

IND. PERFORM	REA RATIO	MB RATIO	BIRTH WT.	205 WT.	NR	365 WT.	YR. RATIO
	104	111	69	515	92	801	93

### 8019 AAR Performor 8019

AAR RANCH SCORES						
FOOT	2.5	CALV. E.	2			
DISPO.	2.5	CALF VIG.				
WN WT.	4	FERTILITY	3.5			
FRAME	3	D. MILK	3.5			
MUSCLING	3	UDDER	3			
FLESHING	4	MOTHERING	3.5			

BULL	REG# 19232023	Tattoo: 8019	DOB: 03/04/18			
	SCHAFFER 210 OF 514 1005	SCHAFFER 21ST CENTURY				
<b>MCD PERFORMER 472</b>	MID ELDORENE 6511	CHASE 878 LADY BANDO 07-514				
	B C MID EMBLAZON 854E 702	B C MID EMBLAZON 854E 702				
	B C MID EMBLAZON 854E 702	MID ELDORENE 384				
<b>BARBARAMERE 062 A A R</b>	BARBARAMERE 852 A A R	O C C EMBLAZON 854E				
		GIBBET HILL MIGNONNE E37				
		OAK HOLLOW 7709 OF 1318 1118				
		BARBARAMERE 6050 A A R				

AAA EPD	BW EPD	WW EPD	YW EPD	MILK EPD	MB EPD	REA EPD	ACT. SCR
	1.2	49	91	25	0.14	0.14	39

IND. PERFORM	REA RATIO	MB RATIO	BIRTH WT.	205 WT.	NR	365 WT.	YR. RATIO
	88	93	87	558	100	918	107

### 8027 AAR 604 Absolute 8027

AAR RANCH SCORES						
FOOT	4.5	CALV. E.	2			
DISPO.	4	CALF VIG.				
WN WT.	3	FERTILITY	3			
FRAME	2.5	D. MILK	3			
MUSCLING	3	UDDER	3			
FLESHING	4	MOTHERING	3			

BULL	REG# 19232027	Tattoo: 8027	DOB: 03/09/18			
	K C F BENNETT ABSOLUTE	S A V FINAL ANSWER 0035				
<b>AAR ABSOLUTE 604</b>	JUNEAU TERESSA 4155 AAR	THOMAS MISS LUCY 5152				
	SPUR FRANCHISE OF GARTON	MCD AAR JUNEAU 944				
<b>TERESSA 656 AAR</b>	TERESSA UNO 468 AAR	AMBUSH TERESSA 0174 A A R				
		SPUR FRANCHISE 7070				
		H&H IRENE LASS 0135				
		C C A UNO 049				
		TERESSA 958 A A R				

AAA EPD	BW EPD	WW EPD	YW EPD	MILK EPD	MB EPD	REA EPD	ACT. SCR
	1.4	48	82	27	0.53	0.56	42

IND. PERFORM	REA RATIO	MB RATIO	BIRTH WT.	205 WT.	NR	365 WT.	YR. RATIO
	98	93	83	581	95	799	91

### 8025 AAR 427 Uno 8025

AAR RANCH SCORES						
FOOT	3.5	CALV. E.	2			
DISPO.	3	CALF VIG.				
WN WT.	3.5	FERTILITY	3			
FRAME	4	D. MILK	3.5			
MUSCLING	3	UDDER	2.5			
FLESHING	3	MOTHERING	3			

BULL	REG# 19232025	Tattoo: 8025	DOB: 03/04/18			
	O C A UNO 049	SITZ UPWARD 307R				
<b>AAR UNO 427</b>	BARBARAMERE 361 A A R	MYTTY COUNTESS 906				
	BRUSETT FRANKLIN U28	CONNEALY FREIGHTLINER				
<b>BRUSETT FOREVER Y202</b>	BRUSETT FOREVER Q742	BARBARAMERE 958 A A R				
		TC FRANKLIN 619				
		BRUSETT 520 J006				
		BRUSETT TIMESAVER 91				
		BRUSETT 8180 325				

AAA EPD	BW EPD	WW EPD	YW EPD	MILK EPD	MB EPD	REA EPD	ACT. SCR
	2.6	52	96	25	0.37	0.3	37.5

IND. PERFORM	REA RATIO	MB RATIO	BIRTH WT.	205 WT.	NR	365 WT.	YR. RATIO
	99	86	85	571	102	918	107



Where does my help come from? My help comes from the Lord, the maker of heaven and earth. – Psalm 121: 1-2

### 8030 AAR Renegade 8030

BULL REG# 19232028 Tattoo: 8030 DOB: 03/22/18  
 RITO 707 OF IDEAL 3407 7075  
**FAIRVIEW RENEGADE 4166**  
 FAIRVIEW LADY TRAVELER X85  
 KOU PAL ADVANCE 28  
**ADVANCE PRIDE 5067 AAR**  
 OX BOW PRIDE 0129

AAR RANCH SCORES			
FOOT	4	CALV. E.	3
DISPO.	3	CALF VIG.	
WN WT.	3	FERTILITY	3.5
FRAME	2.5	D. MILK	3.5
MUSCLING	4	UDDER	3
FLESHING	4	MOTHERING	3

AAA EPD	BW EPD	WW EPD	YW EPD	MILK EPD	MB EPD	REA EPD	ACT. SCR
	0	47	77	25	0.11	0.23	37
IND. PERFORM	REA RATIO	MB RATIO	BIRTH WT.	205 WT.	NR	365 WT.	YR. RATIO
	91	106	79	569	102	846	99

### 8032 AAR Convertabull 8032

BULL REG# 19232029 Tattoo: 8032  
 WILLEKES CONVERTER 4402-9  
**AAR CONVERTABULL 401**  
 BARBARA PERFECTION 2058 AAR  
 AAR HERO 011  
**BARBARA PERFECTION 2162 AAR**  
 BARBARA PERFECTION 953 A A R

AAR RANCH SCORES			
FOOT	4	CALV. E.	3
DISPO.	3	CALF VIG.	
WN WT.	3	FERTILITY	3
FRAME	3	D. MILK	3
MUSCLING	2	UDDER	3
FLESHING	3	MOTHERING	3.5

AAA EPD	BW EPD	WW EPD	YW EPD	MILK EPD	MB EPD	REA EPD	ACT. SCR
	-0.3	43	70	24	0.4	0.27	40
IND. PERFORM	REA RATIO	MB RATIO	BIRTH WT.	205 WT.	NR	365 WT.	YR. RATIO
	100	119	79	610	100	860	99

# K'S DOTS

Ink art

This artwork is created by me, Kyra Armstrong, a cowgirl that was born and raised on a working Ranch in Western Montana. I love my cows and riding up in the mountains. I also enjoy helping in any way that I can, but I'm not much of a mechanic.

I like taking pictures of my life on the ranch and then turning them into art. My art is all done with a fine point sharpie marker. By using little dots I create a picture on bones that I dug out of the back pasture. After I'm done with my bones, I spray them with a Mod Podge finish to help protect them and then add a leather strap to use for hanging the bones up. They are now ready for you to decorate your house or cabin, or maybe as a gift for someone else!



*Kyra Armstrong*  
 929 Hwy 359  
 Cardwell, MT 59721  
 (406)-565-2750

kyraarmstrong335@gmail.com





# YEARLING ANGUS BULLS

We reserve the right to retain 1/3 interest.

## 901 AAR Basic 901

BULL	REG# 19533563	Tattoo: 901	DOB: 01/16/19	<b>AAR RANCH SCORES</b>			
B3R TENDER TEN R065 <b>B3R BACK TO BASICS U077</b> B3R S024 ELISE P061 N191  TC TOTAL 410 <b>TOTAL NACOMA 7061 AAR</b> GLAUS NACOMA 811				FOOT		CALV. E.	5
B3R 0004 ELECTRA 8082-8017 B3R N127 5522 BLACKBIRD 203 B3R P061 M048 CAFD M098 B3R N191 0128 ELISE 9032 BON VIEW NEW DESIGN 208 TC ERICA EILEEN 2047 O C C HOMER 650H GLAUS NACOMA 629				DISPO.	3	CALF VIG.	4
				WN WT.	3.5	FERTILITY	4
				FRAME	3	D. MILK	3
				MUSCLING	3.5	UDDER	3
				FLESHING	4	MOTHERING	3
<b>AAA EPD</b>	BW EPD	WW EPD	YW EPD	MILK EPD	MB EPD	REA EPD	ACT. SCR
	-2.1	49	78	25	0.6	0.13	28.5
<b>IND. PERFORM</b>	REA RATIO	MB RATIO	BIRTH WT.	205 WT.	NR	365 WT.	YR. RATIO
			64	674	109		

## 914 AAR Renegade 914

BULL	REG# 19533591	Tattoo: 914	DOB: 01/26/19	<b>AAR RANCH SCORES</b>			
RITO 707 OF IDEAL 3407 7075 <b>FAIRVIEW RENEGADE 4166</b> FAIRVIEW LADY TRAVELER X85  AAR ADVANCE 5008 <b>BARBARA PERFECTION 7051 AAR</b> BARBARA PERFECTION 574 AAR				FOOT		CALV. E.	4
R R RITO 707 IDEAL 3407 OF 1418 076 LEACHMAN RIGHT TIME B C C LADY TRAVELER 138 93 KOUPL ADVANCE 28 BARBARAMERE 361 A A R MCD AAR JUNEAU 944 BARBARA PERFECTION 855 A A R				DISPO.	3.5	CALF VIG.	4
				WN WT.	3.5	FERTILITY	3.5
				FRAME	3	D. MILK	3
				MUSCLING	3.5	UDDER	3
				FLESHING	4	MOTHERING	3
<b>AAA EPD</b>	BW EPD	WW EPD	YW EPD	MILK EPD	MB EPD	REA EPD	ACT. SCR
	-1.5	46	75	26	0.11	0.37	26
<b>IND. PERFORM</b>	REA RATIO	MB RATIO	BIRTH WT.	205 WT.	NR	365 WT.	YR. RATIO
			70	650	106		

## 904 AAR Basic 904

BULL	REG# 19533580	Tattoo: 904	DOB: 01/22/19	<b>AAR RANCH SCORES</b>			
B3R TENDER TEN R065 <b>B3R BACK TO BASICS U077</b> B3R S024 ELISE P061 N191  C C A UNO 049 <b>BARBARAMERE 778 AAR</b> BARBARAMERE 876 A A R				FOOT		CALV. E.	4
B3R 0004 ELECTRA 8082-8017 B3R N127 5522 BLACKBIRD 203 B3R P061 M048 CAFD M098 B3R N191 0128 ELISE 9032 SITZ UPWARD 307R MYTTY COUNTESS 906 OAK HOLLOW 7709 OF 1318 1118 BARBARAMERE 263 A A R				DISPO.	3.5	CALF VIG.	4
				WN WT.	3	FERTILITY	4
				FRAME	3	D. MILK	3
				MUSCLING	3	UDDER	3
				FLESHING	3	MOTHERING	3
<b>AAA EPD</b>	BW EPD	WW EPD	YW EPD	MILK EPD	MB EPD	REA EPD	ACT. SCR
	-1.3	45	77	27	0.53	0.16	25
<b>IND. PERFORM</b>	REA RATIO	MB RATIO	BIRTH WT.	205 WT.	NR	365 WT.	YR. RATIO
			73	647	105		

## 926 AAR Juneau 926

BULL	REG# 19533600	Tattoo: 926	DOB: 01/27/19	<b>AAR RANCH SCORES</b>			
O C C JUNEAU 807J <b>MCD AAR JUNEAU 944</b> MID AMBUSHESS 354  AAR CONVERTABULL 401 <b>CONVERTA TAURUS 7098 AAR</b> HOMER TAURUS 998 A A R				FOOT		CALV. E.	5
O C C EMBLAZON 854E O C C DIXIE ERICA 903E C A FUTURE DIRECTION 5321 TRANS AMBUSHESS 147 WILLEKES CONVERTER 4402-9 BARBARA PERFECTION 2058 AAR O C C HOMER 650H DUCHES TAURUS 281 A A R				DISPO.	3.5	CALF VIG.	4
				WN WT.	3	FERTILITY	4.5
				FRAME	3	D. MILK	3
				MUSCLING	3.5	UDDER	3
				FLESHING	4	MOTHERING	3
<b>AAA EPD</b>	BW EPD	WW EPD	YW EPD	MILK EPD	MB EPD	REA EPD	ACT. SCR
	-2	39	62	29	0.41	0.37	26.5
<b>IND. PERFORM</b>	REA RATIO	MB RATIO	BIRTH WT.	205 WT.	NR	365 WT.	YR. RATIO
			64	578	94		

## 909 AAR Basic 909

BULL	REG# 19533588	Tattoo: 909	DOB: 01/24/19	<b>AAR RANCH SCORES</b>			
B3R TENDER TEN R065 <b>B3R BACK TO BASICS U077</b> B3R S024 ELISE P061 N191  AAR SURE SHOT 3012 <b>SURE SHOT ROSE 7072 AAR</b> YIELD GRADE ROSE 464 A A R				FOOT		CALV. E.	5
B3R 0004 ELECTRA 8082-8017 B3R N127 5522 BLACKBIRD 203 B3R P061 M048 CAFD M098 B3R N191 0128 ELISE 9032 MOGCK SURE SHOT BARBARAMERE 080 A A R G A R YIELD GRADE TRAVELER ROSE 667 A A R				DISPO.	3	CALF VIG.	3
				WN WT.	3	FERTILITY	4
				FRAME	3.5	D. MILK	3
				MUSCLING	3	UDDER	3
				FLESHING		MOTHERING	3
<b>AAA EPD</b>	BW EPD	WW EPD	YW EPD	MILK EPD	MB EPD	REA EPD	ACT. SCR
	-1.7	34	59	24	0.42	0.08	25
<b>IND. PERFORM</b>	REA RATIO	MB RATIO	BIRTH WT.	205 WT.	NR	365 WT.	YR. RATIO
			65	569	92		

## 932 AAR Aviator 932

BULL	REG# 19533605	Tattoo: 932	DOB: 01/28/19	<b>AAR RANCH SCORES</b>			
KOUPLS B&B IDENTITY <b>MUSGRAVE AVIATOR</b> MCATL FOREVER LADY 1429-138  MCD AAR JUNEAU 944 <b>944 EILEEN 775 AAR</b> EILEEN 561 AAR				FOOT		CALV. E.	5
SITZ UPWARD 307R B&B ERICA 605 S A V FINAL ANSWER 0035 ALC FOREVER LADY R02S O C C JUNEAU 807J MID AMBUSHESS 354 MC SF BUSINESS 2254 BAIRDS EILEEN Q35				DISPO.	3.5	CALF VIG.	4
				WN WT.	4	FERTILITY	3
				FRAME	3.5	D. MILK	4
				MUSCLING	3	UDDER	3
				FLESHING	3	MOTHERING	3
<b>AAA EPD</b>	BW EPD	WW EPD	YW EPD	MILK EPD	MB EPD	REA EPD	ACT. SCR
	-2.4	52	92	29	0.41	0.65	27
<b>IND. PERFORM</b>	REA RATIO	MB RATIO	BIRTH WT.	205 WT.	NR	365 WT.	YR. RATIO
			65	688	112		



Who is it that overcomes the world? Only he who believes that Jesus is the son of God. – 1 John 5:5

936 AAR Basics 936

BULL	REG# 19533607	Tattoo: 936	DOB: 01/31/19	<b>AAR RANCH SCORES</b>			
B3R TENDER TEN R065	B3R 0004 ELECTRA 8082-8017			FOOT		CALV. E.	4
<b>B3R BACK TO BASICS 0077</b>	B3R N127 5522 BLACKBIRD 203			DISPO.	3	CALF VIG.	5
B3R S024 ELISE P061 N191	B3R P061 M048 CAFD M098			WN WT.	3.5	FERTILITY	3
AAR SURE SHOT 3012	B3R N191 0128 ELISE 9032			FRAME	3.5	D. MILK	3
<b>BARBARAMERE 759 AAR</b>	MOGCK SURE SHOT			MUSCLING	3	UDDER	3
608 BARBARAMERE 186 A A R	BARBARAMERE 080 A A R			FLESHING	3	MOTHERING	3
	MID PERFORMER 608						
	BARBARAMERE 469 A A R						
<b>AAA EPD</b>	BW EPD	WW EPD	YW EPD	MILK EPD	MB EPD	REA EPD	ACT. SCR
	-1.9	41	69	28	0.59	0.14	24.5
<b>IND. PERFORM</b>	REA RATIO	MB RATIO	BIRTH WT.	205 WT.	NR	365 WT.	YR. RATIO
			71	634	103		

946 AAR Image Maker 946

BULL	REG# 19533615	Tattoo: 946	DOB: 02/08/18	<b>AAR RANCH SCORES</b>			
HERO 6267 OF R R 2418	R R HERO 6267			FOOT		CALV. E.	4
<b>H A IMAGE MAKER 0415</b>	R R EVERELDA ENTENSE 0413			DISPO.	3	CALF VIG.	3.5
H A RITO BLACKCAP 9038	H 96 RITO 2100 7371			WN WT.	3.5	FERTILITY	3.5
YA EQUATOR 825	H 96 BLACKCAP 3835			FRAME	3.5	D. MILK	4
<b>YA BLUEBIRD LASS 212</b>	YA EQUATOR 548			MUSCLING	3	UDDER	2.5
YA BLUEBIRD LASS 874	YA EILEEN 097			FLESHING	3	MOTHERING	3.5
	RAR REALLY WINDY 34						
	YA BLUEBIRD LASS 020						
<b>AAA EPD</b>	BW EPD	WW EPD	YW EPD	MILK EPD	MB EPD	REA EPD	ACT. SCR
	-2	43	76	28	0.07	0.24	25.5
<b>IND. PERFORM</b>	REA RATIO	MB RATIO	BIRTH WT.	205 WT.	NR	365 WT.	YR. RATIO
			70	503	87		



# Commercial Bred Heifers



- Group 1:** 10 AI heifers. Ultrasounded to have 2 bulls @ 8 Heifers 1/27 - 2/4
- Group 2:** 12 bull bred heifers. Ultrasounded to have heifers 2/10 - 3/2
- Group 3:** 17 bull bred heifers. Ultrasounded to have bulls 2/13 - 3/3
- Group 4:** 7 bull bred heifers. No sex on the calves. 3/12 - 3/28



*603 is the sire to the majority of our bred heifer offering.*

## AAR Absolute 603

REG# 18569756	Tattoo: 603	DOB: 01/15/2016					
S A V FINAL ANSWER 0035							
K C F BENNETT ABSOLUTE							
THOMAS MISS LUCY 5152							
APEX WINDY 078							
WINDY ROSE 476 AAR							
HOMER ROSE 063 A A R							
<b>AAA EPD</b>	<b>BW EPD</b>	<b>WW EPD</b>	<b>YW EPD</b>	<b>MILK EPD</b>	<b>SCR EPD</b>	<b>MB EPD</b>	<b>REA EPD</b>
	-2	+57	+101	+23	+77	+62	+53

AAR RANCH SCORES			
FOOT	4	CALV. E.	4
DISPO.	2	CALF VIG.	3.9
WN WT.	3	FERTILITY	3.5
FRAME	2.5	D. MILK	3
MUSCLING	3.5	UDDER	3
FLESHING	4	MOTHERING	4





Color ~ Class ~ Cow

# Mahlstedt Ranch Quarter Horses



Foals by  
Sanrose Blue Colonel



Foals by CCs Last Warrior



Weanlings, yearlings,  
& young prospects available  
at the ranch private treaty.  
Circle, Montana



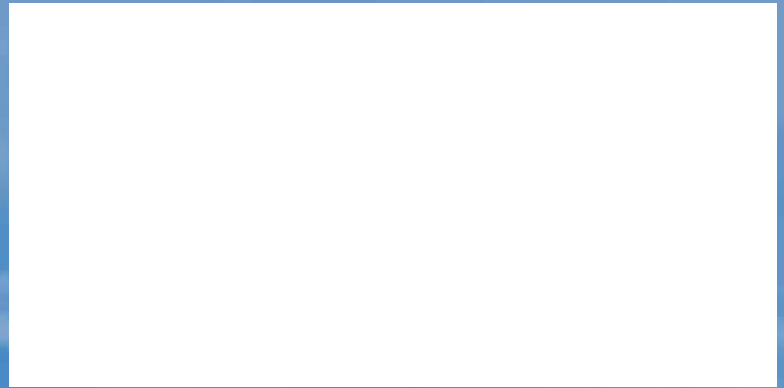
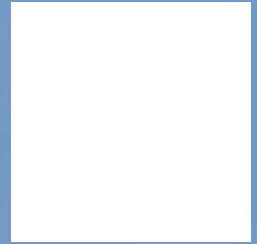
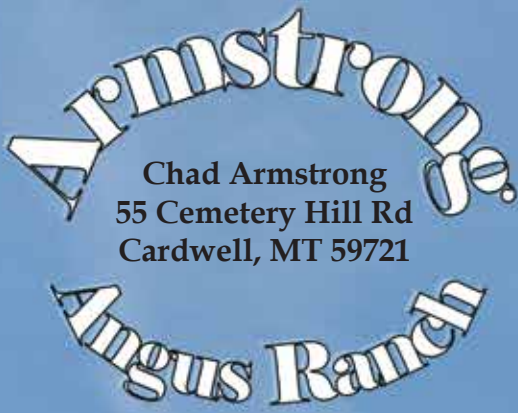
Foals by MRI Snips Spirit



[www.mahlstedtranch.com](http://www.mahlstedtranch.com)

[canen@midrivers.com](mailto:canen@midrivers.com)

(406) 939-1890



**Annual Bull Sale**  
***December 11, 2019 • 1:00 pm***  
**at our ranch south of Cardwell, MT**

**Peace I leave with you; my peace I give you. I do not give to you as the world gives.  
Do not let your hearts be troubled and do not be afraid. - John 14: 27**

